



**Phihong Midspan
User Manual
Rev. 3.2
PES11996**



Disclaimer

Phihong accepts no accountability or liability arising from the use of the Midspans, as described in this document. The handling of equipment will be users' responsibility. Applications described in this document are for descriptive purposes only. Phihong does not provide warranty for modified products.

Notice

This document contains informative information about the software and hardware used on the Midspan. The information is held to be accurate and reliable from time of print. Please be advised that product development and revisions are still in course of action. Phihong cannot be held responsible for involuntary error, exclusions, inaccuracies, or following changes of printed material.

Phihong reserves the right to make changes to products and to their specifications as described in this document, at any time, without prior notice. The contents of this document may not be photocopied or reproduced in any form without written permission of Phihong.

NOTE: Midspans are for indoor use only!

© June 2008 Phihong USA Corp.
All Rights Reserved.
This document is subject to change without notice.

PES11996



Contents

1. Safety Procedures	
1.1 General Precautions	4-6
2. Midspan Hardware Setup	
2.1. Physical Hardware Appearance	7
2.2. Power Cord Requirements	8
2.3. Connecting Ethernet Cables	9
2.4. Connecting USB and Power Cables	9
2.5. Powering Up	10
2.6. LED Indicators	10-11
2.7. Rack-Mounting Installation	11
2.8. Technical Specifications	12-13
3. Phihong GUI and USB Driver Installation	
3.1 PC-to-Midspan Connection via USB/RS232.....	14
3.2 Device Manager: To View Port Properties	15-16
3.3 USB block diagram	17
4. Midspan GUI	
4.1 GUI Main Window	18-19
4.2 GUI System Control	20
4.3 GUI System Information	21-22
4.4 GUI Port Description	23-24
4.5 GUI Parametric Information	25
5. Troubleshooting	26
6. Appendix	
A. Optional RPS – option R	27
B. Optional NIC Interface - option N	28-54
C. Frequent Questions	55



List of Figures:

Figure 1 - Midspan is not connected	7
Figure 2 - Data & Power (top row), Data (bottom row)	7
Figure 3 - Connectors and Indicator	7
Figure 4 - Rear Side of Midspan.....	7
Figure 5 - DC Power Connector	7
Figure 6 - AC Power connector	7
Figure 7 - Midspan connected through ‘Data & Power’ line	9
Figure 8 - NIC Cable	9
Figure 9 - USB Cable	9
Figure 10 - USB Cable Connected	9
Figure 11 - AC Power Cord	9
Figure 12 – Rack-Mounted Midspan	11
Figure 13 – Rack mounting bracket and screws	11
Figure 14 - GUI Main Window	17
Figure 15 - System Setup & Control	18
Figure 16 - System Information and Port Commands	19
Figure 17 - Port Description	20
Figure 18 - LED Key (Port Status).....	21
Figure 19 – Port Specific Control	22
Figure 20 Parametric Information	24

List of Tables:

Table 1: LED Indicator	11
Table 2: Electrical Specifications	13
Table 3: Troubleshooting	35



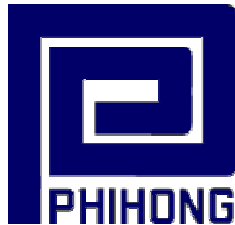
1.1 Safety Procedures – General Precautions

General - Please read the following precautions carefully before installing and connecting the system to a power source.

Note – Only qualified and trained service personnel (in accordance with IEC 60950 and AS/NZS 3260) should install, replace, or service the equipment. Install the system in accordance with Country, National or to the U.S. National Electric Code if you are in the United States.

Precautions:

1. The building facilities in which the product will be used requires a fuse or circuit breaker no larger than 15 A for 120 Vac (U.S.A.) or 10 A, 230 Vac (international). The building facilities must protect the Midspan from over current or short-circuits.
2. Before connecting the Midspan to a power source (including power cord requirements), read the Midspan Hardware Setup procedure in Section 2. This procedure as with all procedures and instructions can be found in the Midspan User Manual. To download a copy of the Manual, visit “[www. Phihong.com](http://www.Phihong.com)”.
3. To prevent the Midspan from overheating, do not operate the product in an area that exceeds the maximum recommended ambient temperature of 40 °C. Allow at least 3 to 4 inches of clearance around all ventilation openings.
4. In order to support the Midspan weight, do not stack the chassis on any other equipment. Shelf mounted equipment requires a stable and durable surface. When installed, do not push or pull on the Midspan when the equipment is installed.
5. The Midspan consists of two rows of “Data and “Data & Power” ports. The ports use RJ-45 data sockets. Do not connect telephone cables into these ports. Only RJ-45 data cables may be connected to these sockets.
6. Do not work on the Midspan system or connect or disconnect cables, during periods of lightning activity.
7. The AC or DC plug/socket combination must be accessible at all times, as it serves as the main disconnect device to the product.
8. Before servicing the product, always disconnect the product from its AC and DC source.
9. Disposal of this product should abide by all appropriate National laws and regulations.



1.1 Sicherheitsmaßnahmen – Allgemeine Vorsichtsmaßnahmen

Allgemein – Lesen Sie die folgenden Vorsichtsmaßnahmen sorgfältig durch, bevor Sie das System installieren und an eine Energiequelle anschließen.

Hinweis – Das Gerät darf nur durch qualifiziertes und geschultes technisches Personal (gemäß IEC 60950 [Vorschrift 60950 der Internationalen Elektrischen Kommission] und AS/NZS 3260 [Vorschrift für Australien und Neuseeland]) installiert, ersetzt oder repariert werden. Installieren Sie das System auch in Übereinstimmung mit den geltenden nationalen oder europäischen Vorschriften bzw. der NEC-Vorschrift, falls Sie sich in den Vereinigten Staaten befinden.

Vorsichtsmaßnahmen:

1. Die Gebäudeinstallationen, in denen das Produkt benutzt wird, müssen über eine Sicherung oder einen Schutzschalter mit maximal 15 A für 120 VAC (USA) oder 10 A für 230 VAC (international) verfügen. Die Gebäudeinstallationen müssen das Midspan-Device vor zu starkem Strom oder Kurzschlüssen schützen.
2. Lesen Sie vor dem Anschließen des Midspan-Device an eine Energiequelle (einschließlich der erforderlichen Anschlussleitungen) die Setup-Anleitung für Ihre Midspan-Hardware in Kapitel 2 genau durch. Dieses Verfahren wird zusammen mit allen weiteren Vorgängen und Anweisungen im Benutzerhandbuch für das Midspan-Device beschrieben. Sie können das Benutzerhandbuch unter "[www. Phihong.com](http://www.Phihong.com)" herunterladen.
3. Um das Midspan-Device vor Überhitzung zu schützen, benutzen Sie das Produkt nicht in Räumen, die die maximale empfohlene Umgebungstemperatur von 40°C überschreiten. Lassen Sie um alle Lüftungsöffnungen herum mindestens 7,5 bis 10 cm (3-4 inches) frei.
4. Stützen Sie das Gewicht des PoE Midspan-Device nicht ab, indem Sie das Gehäuse auf ein anderes Gerät stellen. Falls Sie das Gerät auf ein Gestell montieren, muss dieses eine stabile und haltbare Oberfläche haben. Nach der Installation des Systems bewegen Sie das Midspan-Device nicht mehr.
5. Das Midspan-Device enthält zwei Reihen mit "Datenports" und "Daten- und Stromports". Die Ports verwenden RJ45-Datenanschlüsse. Schließen Sie keine Telefonkabel an diese Ports an. Es dürfen nur RJ45-Datenkabel an diese Eingänge angeschlossen werden.
6. Führen Sie an dem Midspan-System keine Arbeiten durch, schließen Sie keine Kabel an und trennen Sie keine Kabelverbindungen während Gewittern mit Blitzen.
7. Der Steckanschluss für Gleich- oder Wechselstrom muss jederzeit zugänglich sein, da er als Haupttrenngerät für das Produkt dient.



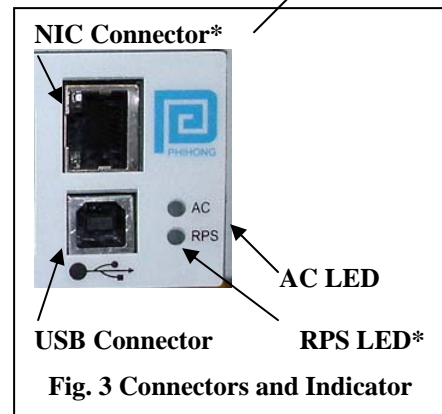
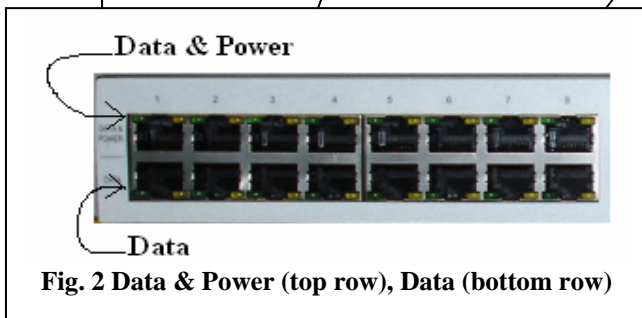
8. Trennen Sie das Produkt immer erst von der Stromquelle, bevor Sie Wartungs- oder Reparaturarbeiten daran durchführen.
9. Entsorgen Sie dieses Produkt gemäß aller geltenden Gesetze und Vorschriften Ihres Landes und der EU (falls Sie sich in einem Land der EU befinden).



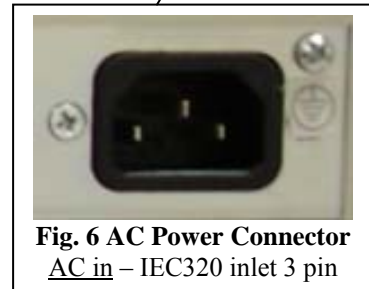
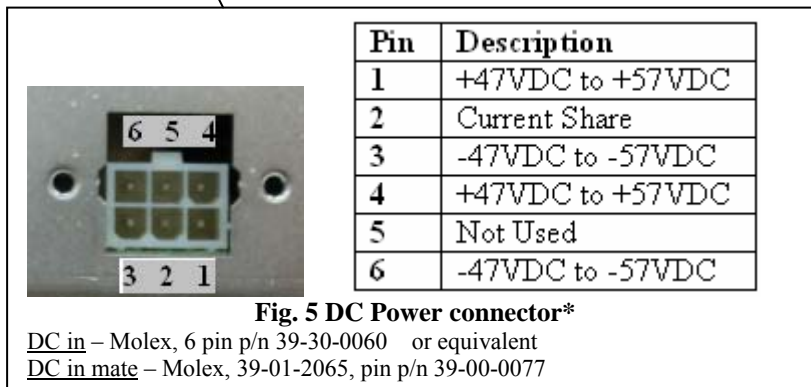
2. Midspan Hardware Setup

2.1 Physical Hardware Appearance:

Front Side of Midspan:



Rear Side of Midspan:



*Optional Components – please see Appendix A and Appendix B.

Phihong USA Corporation • East Coast Engineering Center • 630 Johnson Ave. Suite 102, Bohemia, NY 11716 • Tel: (631) 610-2289
www.Phihong.com or www.Midspans.com



2.2 Power Cord Requirements:

Power cords must meet the requirements for the country it is intended to be used.

U.S.A. and Canada

- The cord must have a minimum of 10A rated current competence.
- The cord must be CSA or UL approved.
- The minimum requirement for the flexible cord is:
 - 18 AWG (10A)
 - Three-conductor (Line, Neutral, Ground)
 - Type SV (Stranded Vacuum Rubber Jacketed) or SJ (Stranded Junior Rubber Jacketed) or SVT (Stranded Vacuum Rubber Jacketed Themoplastic) or SJT (Stranded Junior Themoplastic)
- The plug must be earth-grounded with a NEMA 5-15P (15A, 125 V) or NEMA 6-15P (15A, 250 V) configuration.

Europe

Switzerland

- The supply plug must comply with SEV/ASE 1011.

Denmark

- The supply plug must comply with section 107-2-D1, standard DK2-1a or DK2-5a.

United Kingdom

- The Midspan is covered by General Approval (section 16.16.060), NS/G/12345/J100003, for indirect connection to a public telecommunication system.

France and Peru

- IT equipments cannot power this device. In the case of an IT powered device, the unit needs to be powered by 230 V through an isolation transformer with a ratio of 1:1 and the secondary connection (Neutral) is properly grounded.

- The Midspan must have access to a nearby power outlet. By disconnecting the power cord from the outlet, you will eliminate power from the device.
- The flexible cord that connects to the Midspan must have a configuration to connect with an EN60320/IEC320 inlet connector.
- According to the EN60950/IEC 950 specifications, this device functions under SELV (Safety Extra Low Voltage) conditions. The conditions are true if the equipment and the connected device functions under SELV conditions.



2.3 Connecting Ethernet Cables*

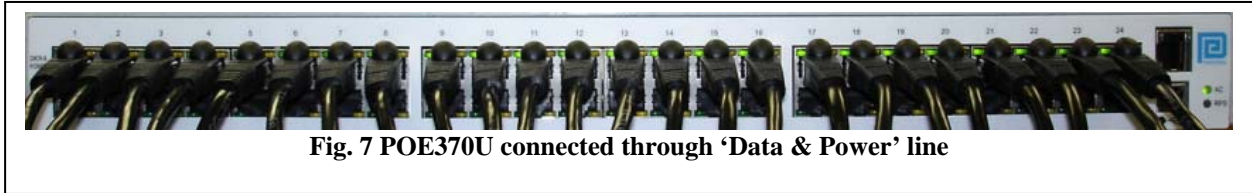


Fig. 7 POE370U connected through 'Data & Power' line



Fig. 8 NIC Cable* Connected

2.4 Connecting USB and Power Cables

USB cable:

The USB cable is connected to the USB connector located in the front side of the Midspan and a USB port on your PC/labtop.



Fig. 9 USB Cable*



Fig. 10 USB Cable Connected

AC power cord:

The AC power cable is connected to the AC power connector located in the rear side of the Midspan and the power outlet.



Fig. 11 AC Power Cord**

*Ethernet and USB cables are not included

** AC Power Cord may be order separately



2.5 Powering Up

Midspan is powered by the power cord. In order to apply or remove power to/from the Midspan, connect or disconnect the AC power cable to/from the AC power connector on the rear side of the unit.

With AC power applied, the unit starts-up and the internal fans are active. The device runs through a quick power-on test, which takes less than 10 seconds. During this period, all ports are initially disabled and the port indicators light up. The sequence of the port LEDs are shown in section 2.6 LED Indicator – Cold Start. Ports are now operating under normal conditions.

2.6 LED Indicator:

Cold Start:

- a. **AC** – LED turns ‘green’ → remains on
- b. **NIC** – LED turns ‘green’ → red → green → turns off → red → turns off (unless connected)
- c. **24-Ports (with ports connected)** – LED turns ‘orange’ → green → orange → green → turns off – *LED turns ‘green’ individually* → ports 1,9,17 → ports 2,10,18 → ports 3,11,19 → ports 4,12,20 → ports 5,13,21 → ports 6,14,22 → ports 7,15,23 → ports 8,16,24 → All 24-Ports are connected – LED remains ‘green’
- d. **24-Ports (without ports connected)** – LED turns ‘orange’ → green → orange → green → turns off – *LED blinks ‘orange’ individually* → ports 1,9,17 → ports 2,10,18 → ports 3,11,19 → ports 4,12,20 → group 5,13,21 → ports 6,14,22 → ports 7,15,23 → ports 8,16,24 → Blinks ‘orange’ across all 24-Ports

When ‘System Reset’ is clicked on the GUI (application file):

- a. **AC** – LED remains ‘green’
- b. **NIC** – LED remains off unit connected
- c. **24-Ports (with ports connected)** – same sequence as Cold Start
- d. **24-Ports (without ports connected)** – same sequence as Cold Start



Table 1: LED Indicator

Indicator	Conditions			
	LED Off	Green	Orange	Blinking Orange
Port LED	Indicates port is disabled	Indicates port is connected	Indicates port has an error	Indicates port is disconnected but enabled
NIC LED	Indicates NIC is disconnected from Network	N/A	Indicates NIC is connected to Network	N/A
AC LED	Indicates Midspan is not powered	Indicates Midspan is powered	N/A	N/A

2.7 Rack-Mounting Installation



Fig. 12 Rack-Mounted Midspan (front)

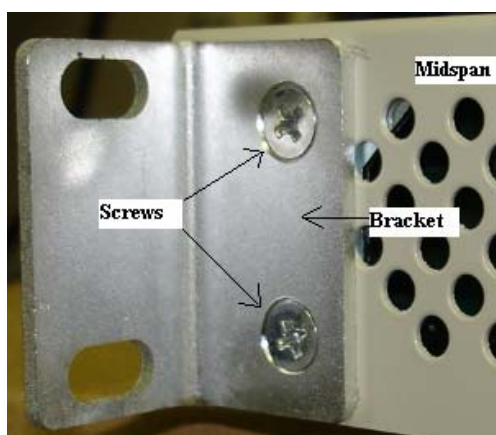
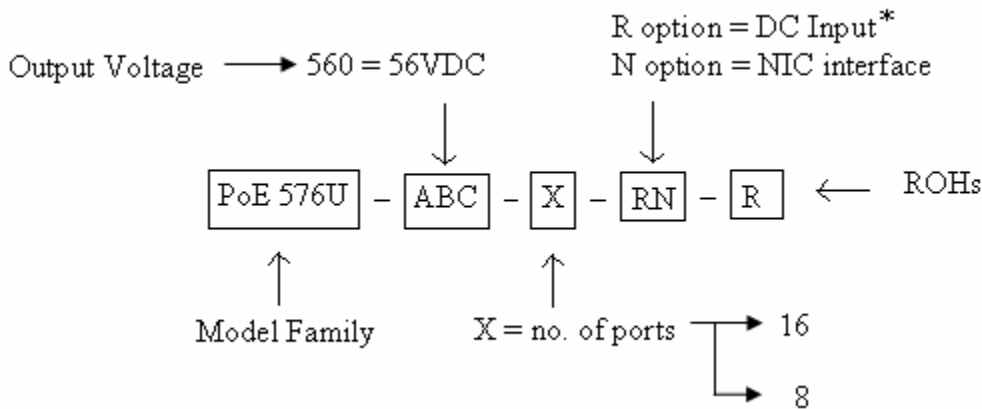
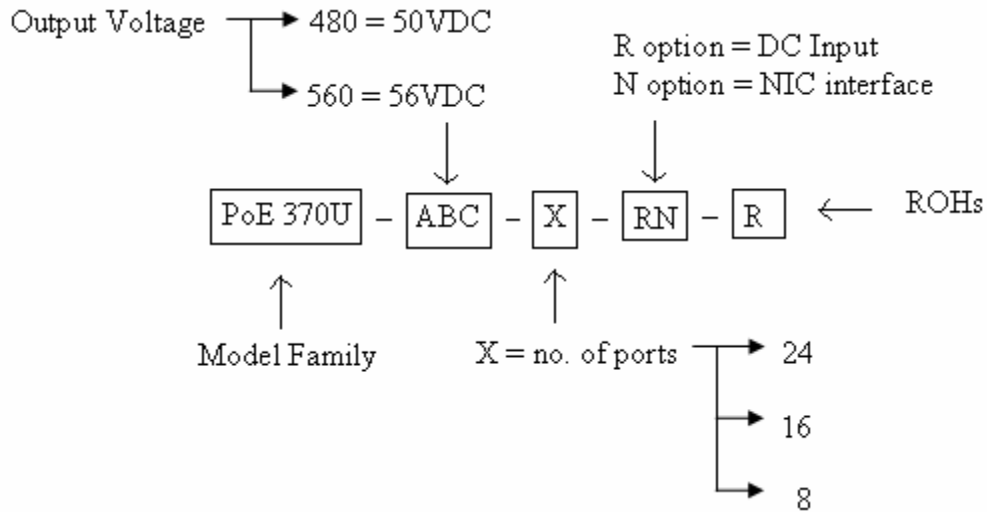


Fig. 13 Rack mounting bracket and screws (side/rear)

Position the Midspan on the rack. Arrange the mounting bracket to the corresponding screw holes on the Midspan. Keep the screw area visible to insert screws, and then tighten the screws. Screws and brackets will be included in the package.



2.8 Technical Specifications



Mechanical Specifications:

Dimensions – 17.25 inch (438 mm) length
 8.98 inch (228 mm) width
 1.75 inch (44.5 mm) height

Environmental Specifications:

Temperature

- Operating: 0°C to +40°C
- Non-Operating: -25°C to +65°C

Relative Humidity

- Operating: 5% to 90%
- Non-Operating: 5% to 90%

*Please contact sales for more info.

Phihong USA Corporation • East Coast Engineering Center • 630 Johnson Ave. Suite 102, Bohemia, NY 11716 • Tel: (631) 610-2289
www.Phihong.com or www.Midspans.com



Electrical Specifications:

Table 2: Electrical Specifications

Parameters	Specifications		
AC Input voltage rating	100VAC to 240VAC		
AC Input voltage range	90VAC to 264VAC		
AC Input current	5.5A (rms) at Max. load		
AC Input frequency:	47Hz to 63Hz		
Max. In-rush current	30A for 115VAC at Max. load 60A for 230VAC at Max. load		
DC Input voltage range (-R option)	47VDC to 57VDC		
DC Input current	8.7A max		
AC Output voltage	POE370U		POE576U
	-480	-560	-560
	50VDC	56VDC	56VDC
Max. load current	0.32A	0.275A	0.65A
Output Power, per port			
POE370U	15.4W (not to exceed total output power)		
POE576U	36W (not to exceed total output power)		
Total Output Power	No. of ports		
	-8	-16	-24
	POE370U	125W max	250W max
POE576U	288W max	576W max	N/A
Nominal Output Voltage	44VDC to 57VDC		



3. Phihong GUI and USB Driver Installation:

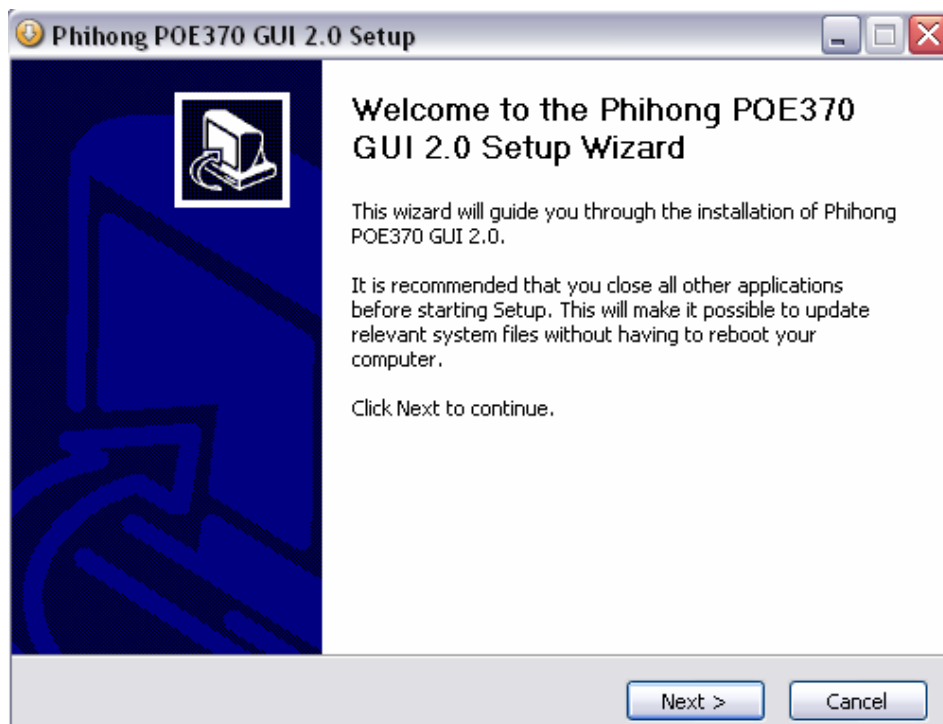
Please locate and download the file **Phihong GUI Installation** from the Phihong website (www.midspans.com).

Please follow the Installation Wizard to install the Phihong GUI for your model, and the USB-to-Serial Comm Port driver. The USB-to-Serial Comm Port driver is necessary for communicating between the Midspan via a Communication Port on the PC.



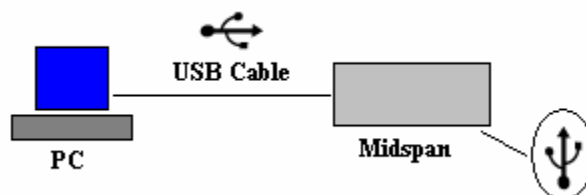
Phihong_POE370_GUI_2.0_Setup.exe

Example of the Setup file



Note: Please refer to the Phihong website to insure you are installing the latest version of the Phihong GUI. Example shown is using the POE370U GUI.

3.1 PC-to-Midspan Connection via USB/RS232

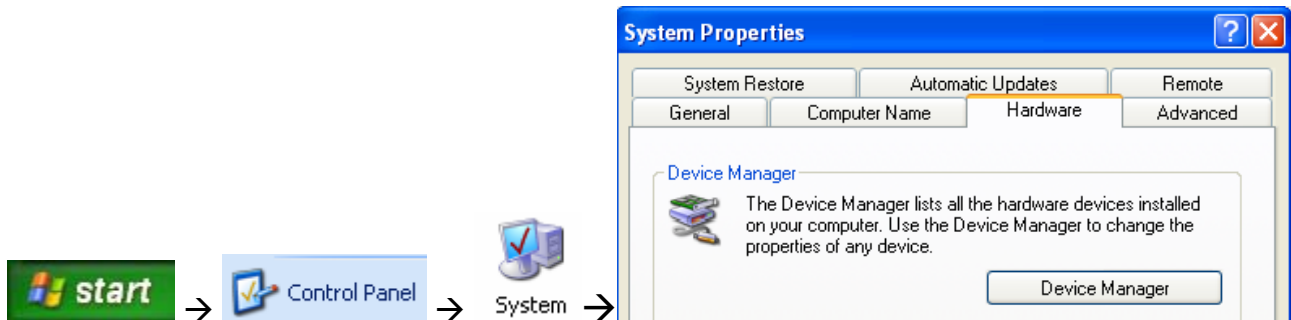




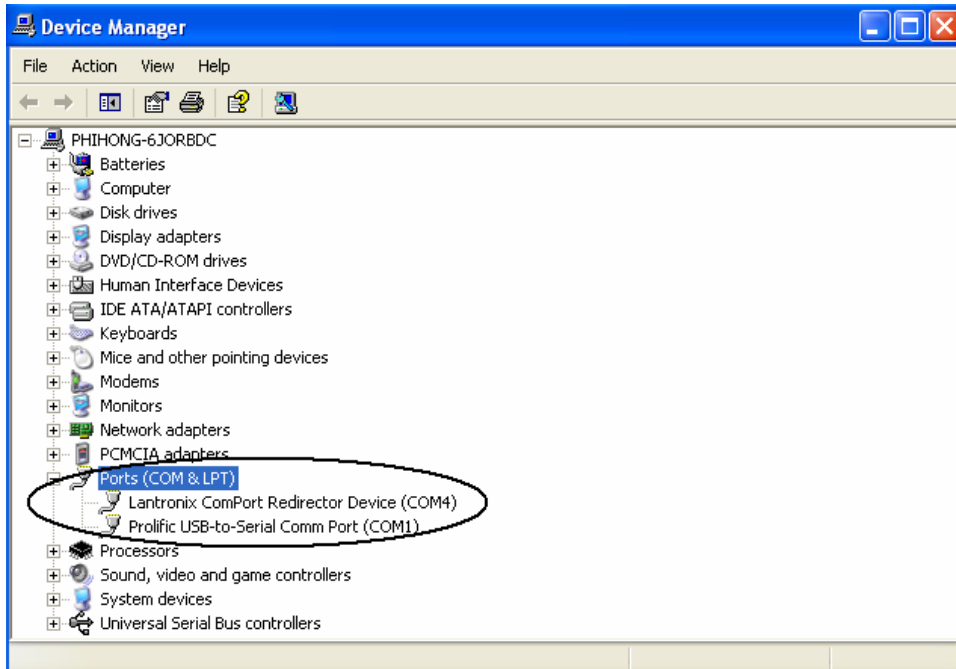
3.2 Device Manager: To view Port Properties

When you are ready to begin, please connect the proper end of the USB-to-Serial cable to your Midspan and the other to an available USB port on your PC. If you installed the USB driver described above, your PC will locate the new hardware.

To view which Serial COM Port your Midspan is installed, please follow the instructions:




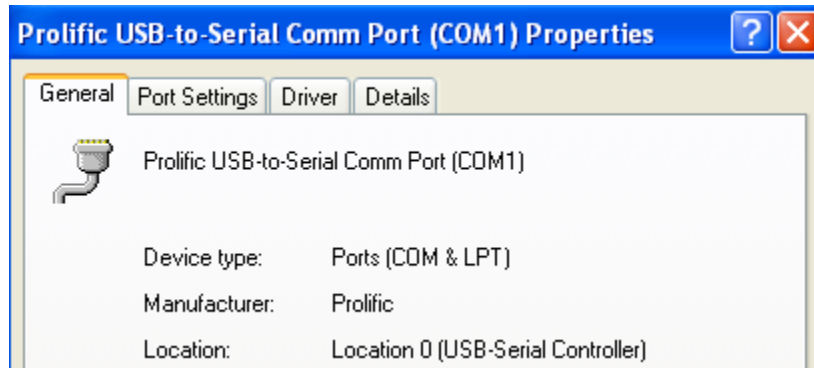
Please click , the following window will open:

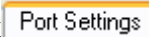
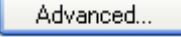


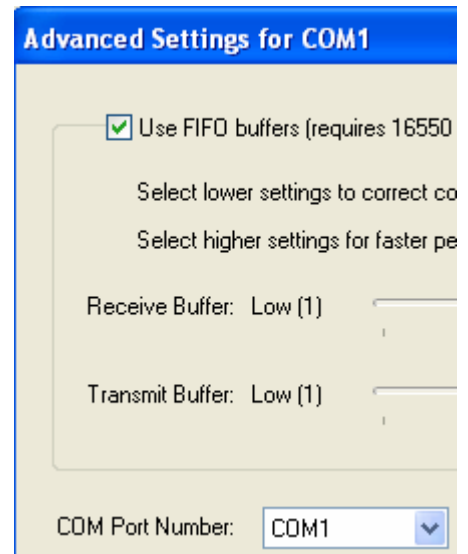
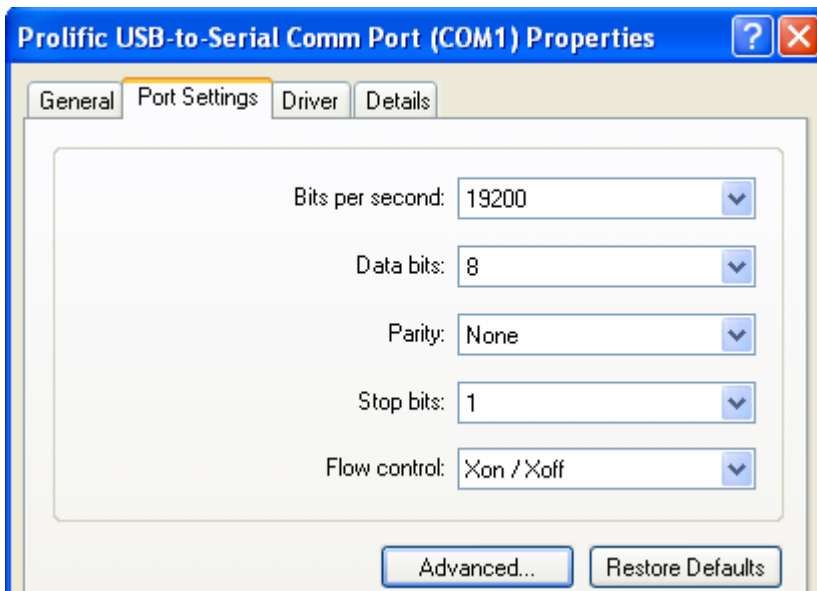
Locate and expand 'Ports (COM & LPT)'



Double click  Prolific USB-to-Serial Comm Port (COM1) . In this example, the USB-to-Serial Comm Port is installed on COM1. The COM Port will vary upon user.



Click . Assure Port Settings is as shown. Click . Click the pull down menu to select the COM Port Number or stay with default.

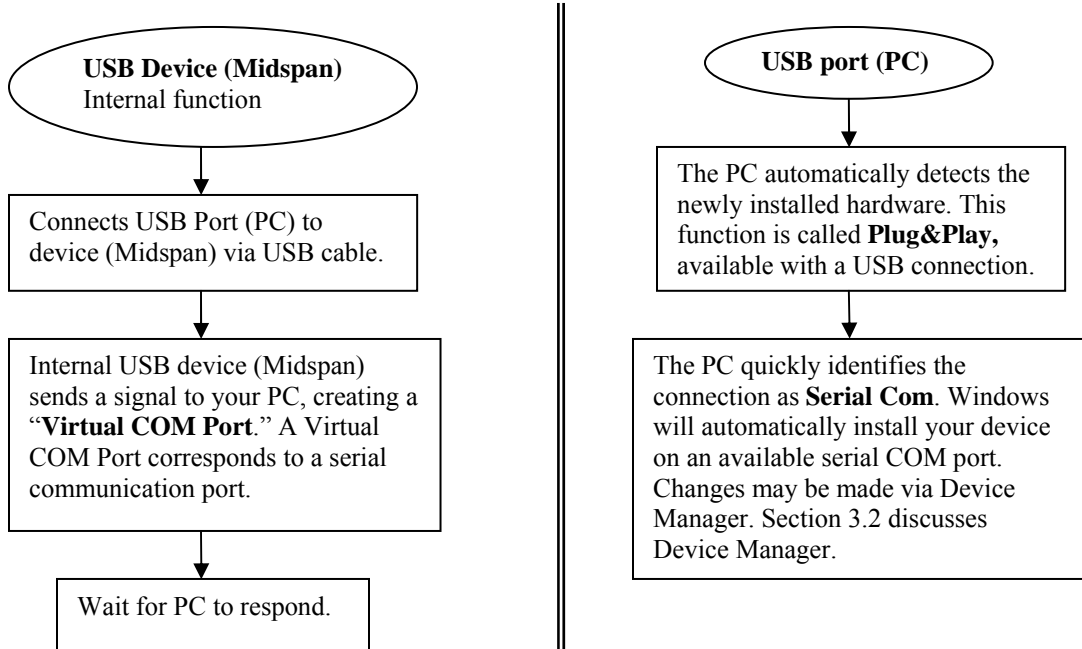


Click  to save all changes.

Note: The Midspan GUI only supports COM1 to COM16.



3.3 USB block diagram



Note: Assume USB-to-Serial-Comm Port driver is installed. Users' PC will automatically detect the newly installed/connected hardware.



4. Midspan GUI

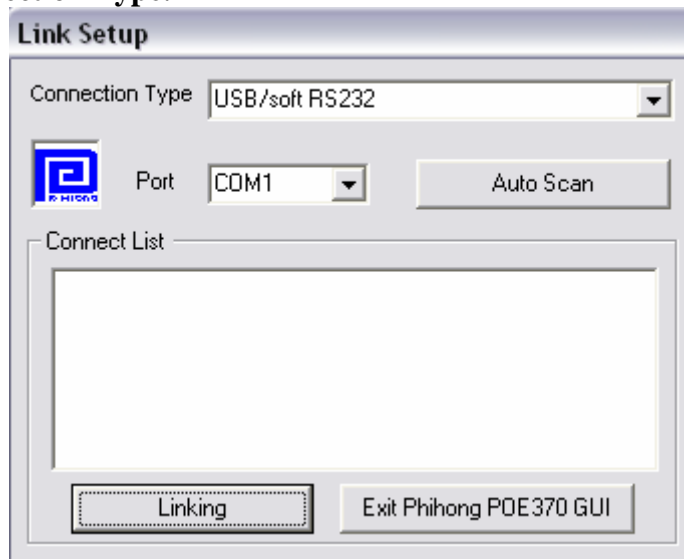
The firmware is supplied with a Graphical User Interface (GUI), which is used to configure and manage the PoE midspan system. If you have successfully installed the Phihong GUI and USB driver – Please locate the **Phihong POE GUI x.x.exe** (x.x is revision no.) on your desktop or from your Start menu. (Examples shown below are using the POE370U Midspan)



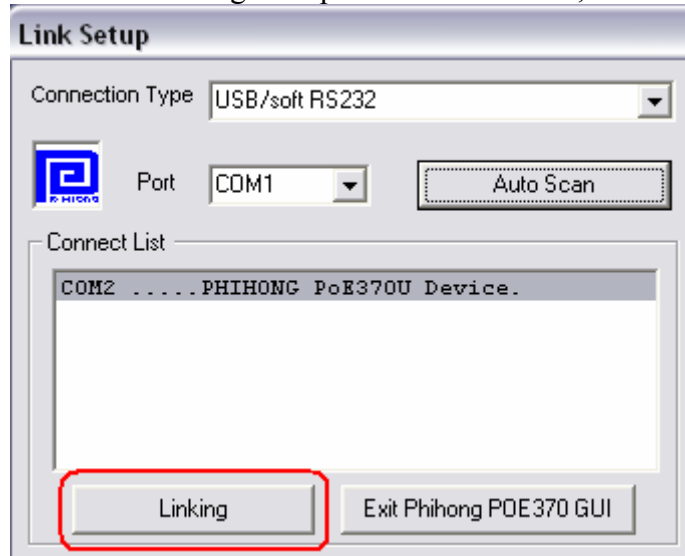
OR



Step 1: Choose **Connection Type**:



Step 2: Select **Auto Scan**: If the Phihong Midspan Device is found, click Linking.





4.1 GUI Main Window:

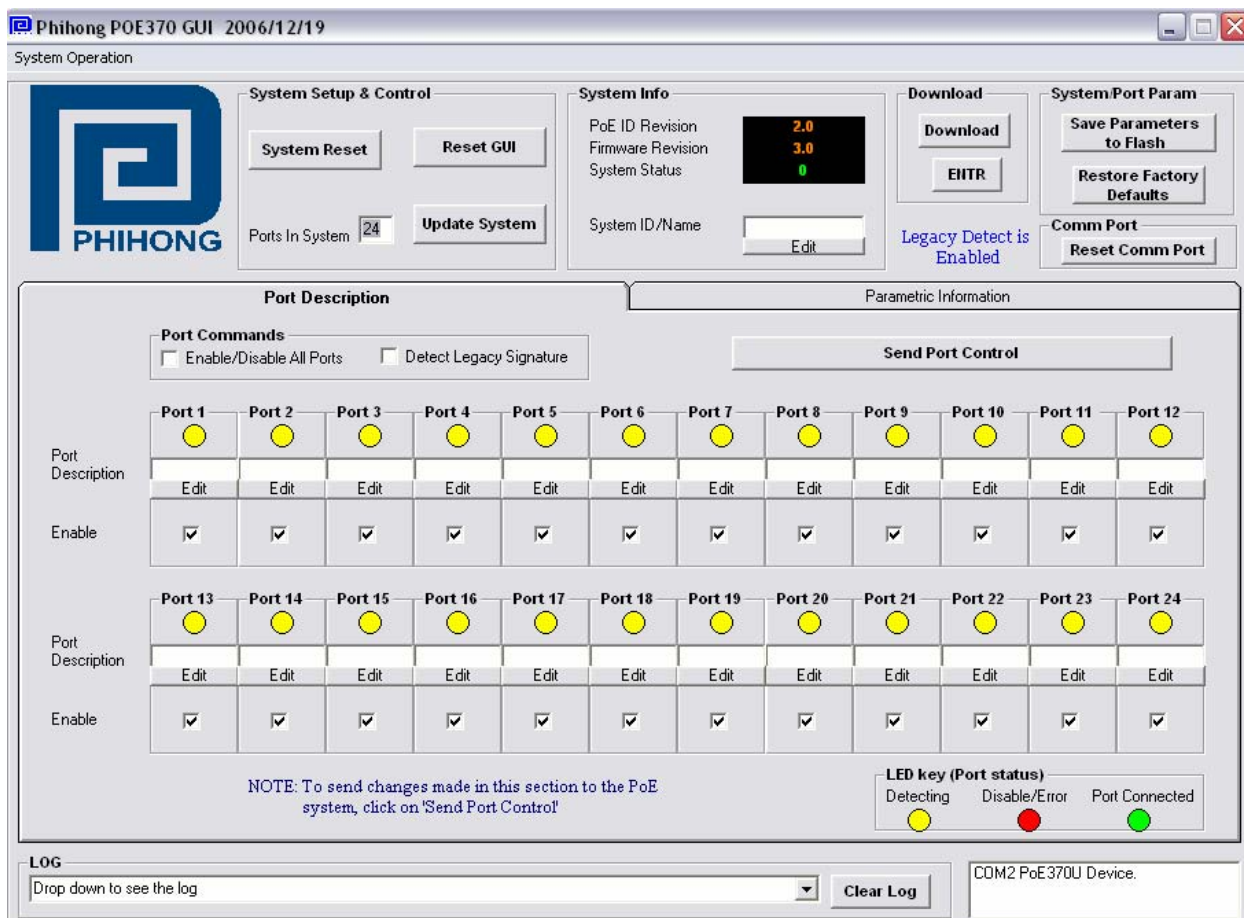


Figure 14: GUI Main Window

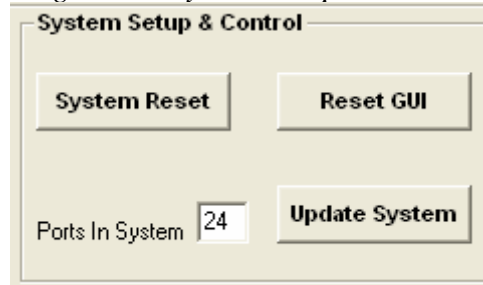
Note: All features except for the **Download** and **Comm Port** commands are supported for the **Optional NIC Interface – option N** found in **Appendix B**.



4.2 GUI System Control:

The System Control panel on the GUI supports the main system level parameters for the μ P.

Figure 15: System Setup & Control



The system level parameters that can be configured are:

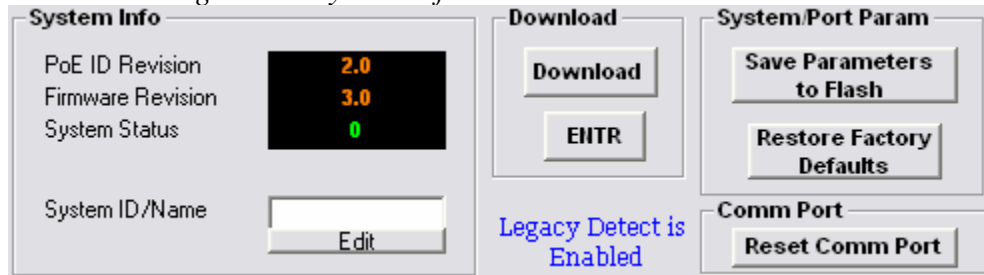
- *System Reset* – This is a function that allows the GUI to reset the software on the μ P. (If System Reset is set and the GUI does not respond, user must click “Reset GUI”)
- *Reset GUI* – This resets the GUI.
- *Ports in System* – This automatically selects the number of ports in the system.
- The “*Update System*” button will send all configuration information for both system level and port level parameters to the μ P.



4.3 GUI System Information:

The System Information panel on the GUI displays information about the PoE ID, firmware revision, and system status.

Figure 16: System Information and Port Commands



Note: Please allow the GUI a few seconds to respond to the commands selected. DO NOT click or check any commands simultaneously. If a command is selected more than once within two seconds, the GUI may not respond properly. If the GUI fails to respond, wait five seconds and then click “Reset GUI” (click “Reset GUI” again if necessary). Verify that the “System Status” reads “0”, which indicates that there is a good connection.

The “**Save Parameters to Flash**” button will save system and port parameters to flash memory, so that they can be used by the firmware across reboots of the μ P.

The “Restore Factory Defaults” button will reset the defaults in the firmware, and clear any stored data in the flash memory, the device will reset automatically. After the device has successfully reset, the “System Status” will read “0.” Click “Reset GUI” if necessary. **To make the factory defaults permanent, the user must click “Save Parameters to Flash.”**

The PoE ID field specifies the hardware revision of the PoE device. The firmware version is represented in a *major.minor* format.

If “System Status” reads “0” it means that the system and the GUI are communicating. If “System Status” reads “No Connection” it means that the system is not communicating with the GUI and the user needs to “Reset GUI.”

System ID/Name - click “Edit” to edit/change the description of the system. If you click “Cancel”, the previous description will be set for the system. **To make this permanent, the user must click “Save Parameters to Flash.”**



The “Download” or “ENTR” feature is used to download new application/firmware code onto the μ P. Please refer to the Phihong website (www.midspans.com) for the latest firmware – **POE Firmware**.

During the ‘Download In Progress’, the GUI function buttons will be temporarily disabled.

Example file:

TIPProtoRS232v30.s99

73 KB 599 File

12/5/2006 11:13 AM

The screenshot shows the Phihong POE370 GUI interface. The title bar reads "Phihong POE370 GUI 2006/12/19". The main window is titled "System Operation" and contains several sections:

- System Setup & Control:** Includes buttons for "System Reset", "Reset GUI", and "Update System". A "Ports In System" field is set to 24.
- System Info:** Displays "PoE ID Revision" (2.0), "Firmware Revision" (3.0), and "System Status" (0). There is an "Edit" button for "System ID/Name".
- Download:** Features "Download" and "ENTR" buttons. A status message indicates "Legacy Detect is Enabled".
- System/Port Param:** Includes "Save Parameters to Flash", "Restore Factory Defaults", and "Reset Comm Port" buttons.
- Port Description:** A table with 24 columns (Port 1 to Port 24). Each column has a yellow status indicator, an "Edit" button, and an "Enable" checkbox (all checked).
- Port Commands:** Includes checkboxes for "Enable/Disable All Ports" and "Detect Legacy Signature", and a "Send Port Control" button.
- LED key (Port status):** A legend showing a yellow circle for "Detecting", a red circle for "Disable/Error", and a green circle for "Port Connected".
- LOG:** A section with a dropdown menu and a "Clear Log" button.

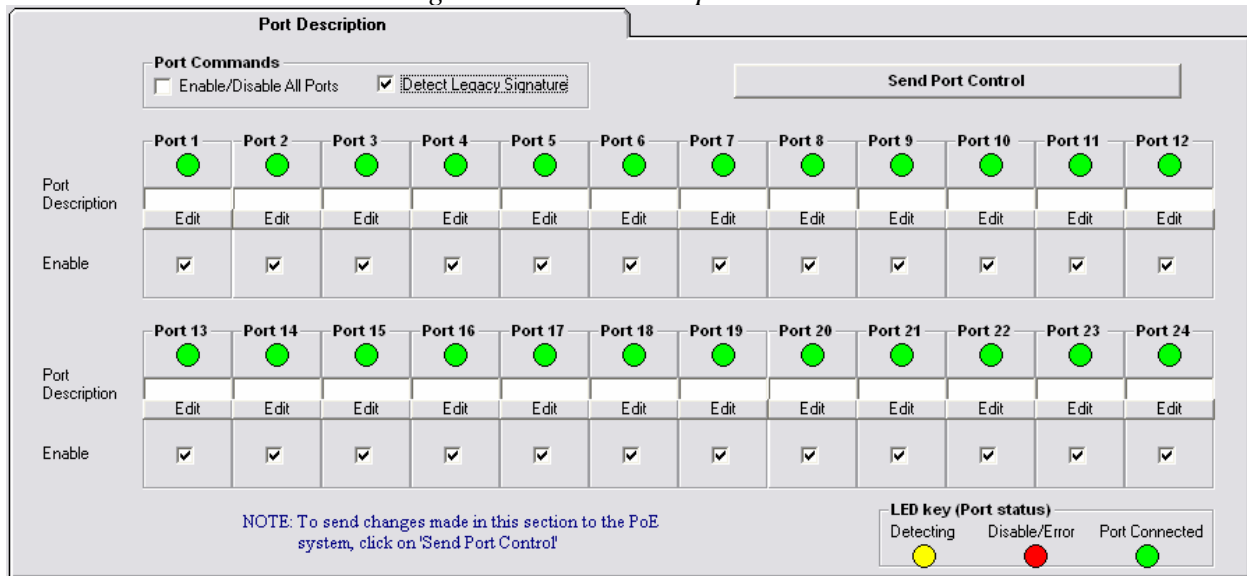
A red banner at the bottom right of the GUI reads "DOWNLOAD IN PROGRESS".



4.4 GUI Port Description:

The Port Description panel shows 24-ports. On the PoE midspans that have 8 or 16-ports, the port number higher than the system port count will be shaded grey and disabled. Each section specifies the individual port descriptions for the system.

Figure 17: Port Description



Changes to the port configuration in this section can be enacted when the user clicks the “**Send Port Control**” button. It will send the port information to the μ P for 24-ports. Please allow the GUI 10 seconds to refresh when action is taken.

Port Description – Click “Edit” to edit/change the description of the port. Click “Ok” to set description on the GUI screen. If you click “Cancel”, the previous description will be set for that particular port. **Click “Send Port Control” to send the descriptions to the system. To make this permanent, the user must click “Save Parameters to Flash.”**

Enable – This check box can administratively enable or disable the selected port. If “Enable/Disable All Port” checkbox is selected, all ports will be enabled. Initially, the checkbox is not checked, but by default all ports are enabled. **Click “Send Port Control” to send the command to the system. To make this permanent, the user must click “Save Parameters to Flash.”**

If “*Detect Legacy Signature*” checkbox is selected, all ports are enabled and the firmware will try to detect legacy devices. By default, legacy detection is disabled. The message in blue states that the “**Legacy Detect is Enabled**” (Figure 16). **Click “Send Port Control” to send the command to the system. To make this permanent, the user must click “Save Parameters to Flash.”**



The different colored LEDs show the status of the individual ports. 'Yellow' LED shows the port is detecting or ready to be connected. 'Red' LED shows the port as Disable/Error. 'Green' LED shows that the port is connected.

Figure 18: LED Key (Port Status)





4.5 GUI Parametric Information:

This section allows users to review, but not edit, the Parametric Information for each port.

Figure 19: Parametric Information

Parametric Information												
	Port 1	Port 2	Port 3	Port 4	Port 5	Port 6	Port 7	Port 8	Port 9	Port 10	Port 11	Port 12
Discovery R	24536	24536	24536	24328	24620	24576	24494	24748	24672	24312	24590	24750
Discovery C	(uF)	(uF)	(uF)	(uF)	(uF)	(uF)	(uF)	(uF)	(uF)	(uF)	(uF)	(uF)
Current (mA)	322	320	320	320	320	320	321	322	325	323	324	325
Voltage (V)	49.2	49	49	48.9	48.9	49	49	49.1	49.1	49.2	49.1	48.9
Power (mW)	15842	15680	15680	15648	15648	15680	15729	15810	15957	15891	15908	15892
Class Current	0.8	3	1.3	2.4	0.4	0.8	0.4	0.4	1	2.7	4.6	6.4
Determined Class	0: 15.4W	0: 15.4W	0: 15.4W	0: 15.4W	0: 15.4W	0: 15.4W	0: 15.4W	0: 15.4W	0: 15.4W	0: 15.4W	0: 15.4W	0: 15.4W
	Port 13	Port 14	Port 15	Port 16	Port 17	Port 18	Port 19	Port 20	Port 21	Port 22	Port 23	Port 24
Discovery R	24548	24392	24712	24712	24090	23726	23806	131070	24008	23846	24090	24048
Discovery C	(uF)	(uF)	(uF)	(uF)	(uF)	(uF)	(uF)	(uF)	(uF)	(uF)	(uF)	(uF)
Current (mA)	319	317	319	318	329	328	328	0	322	324	319	321
Voltage (V)	48.9	49.1	49	49	49.3	49.3	49.2	0.3	49.3	49.2	49.2	49.2
Power (mW)	15599	15564	15631	15582	16219	16170	16137	0	15874	15940	15694	15793
Class Current	0.4	0.4	0.4	0.4	1.4	7.5	8.2	0	0.3	0.3	0.2	0.2
Determined Class	0: 15.4W	0: 15.4W	0: 15.4W	0: 15.4W	0: 15.4W	1: 4W	1: 4W	0: 15.4W	0: 15.4W	0: 15.4W	0: 15.4W	0: 15.4W

The Port Parametric Information panel has the following set of parameters that are displayed:

- Discovery R (ohms) – This value represents the discovered resistance (R) of the port in ohms.
- Current (mA) – This value represents the current (I) of the port in milliamps.
- Voltage (V) – This value represents the voltage (V) of the port.
- Power (mW) – This value represents the power of the port in milliwatts.
- Class Current (mA) – This value represents the class current of the port in milliamps.
- Determined Class – This value represents the class of the discovered device.

Note: If the ports are less than 24-ports for the system, those ports greater than the total system port count will read all zeros “0.”



5. Troubleshooting:

If problems occur with the Midspan, verify the following:

The troubleshooting solutions provided can only solve minor problems. If your problem is not listed, please contact our local office for further technical assistance.

Table 3: Troubleshooting

Problem	Possible Solutions
Midspan does not power up	<ol style="list-style-type: none"> 1. Assure that AC power cord is connected. 2. Assure that AC power cord is in good condition. 3. If solution 1 & 2 are true, then disconnect the AC power cord and reconnect. Observe Port LEDs to verify proper power up.
DC LED not lit	Verify Midspan is properly connected to an AC power source.
Port LED do not light 'green'	<ol style="list-style-type: none"> 1. Port maybe disabled and needs to be enabled using the GUI. Ensure Ports are enabled, then 'Save Flash Parameters' 2. Assure Ports are connected to a Network.
The GUI window does not update port status. (System Status reads: No Connection)	Click 'Reset GUI' until System Status reads '0'
Others. Please verify the following:	<ol style="list-style-type: none"> 1. Power is applied to the Midspan 2. The network Ethernet cable is connected to the Data port 3. The powered device Ethernet cable is connected to the Data & Power port 4. Proper type of Ethernet cable is used, do not use crossover-type Ethernet cable 5. Cable pairs are connected to corresponding ports.



Appendix A: Optional RPS – option R

Please contact our Application Engineering Group for more information.

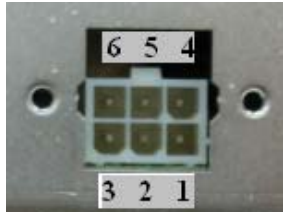
	Pin	Description
	1	+47VDC to +57VDC
	2	Current Share
	3	-47VDC to -57VDC
	4	+47VDC to +57VDC
	5	Not Used
6	-47VDC to -57VDC	

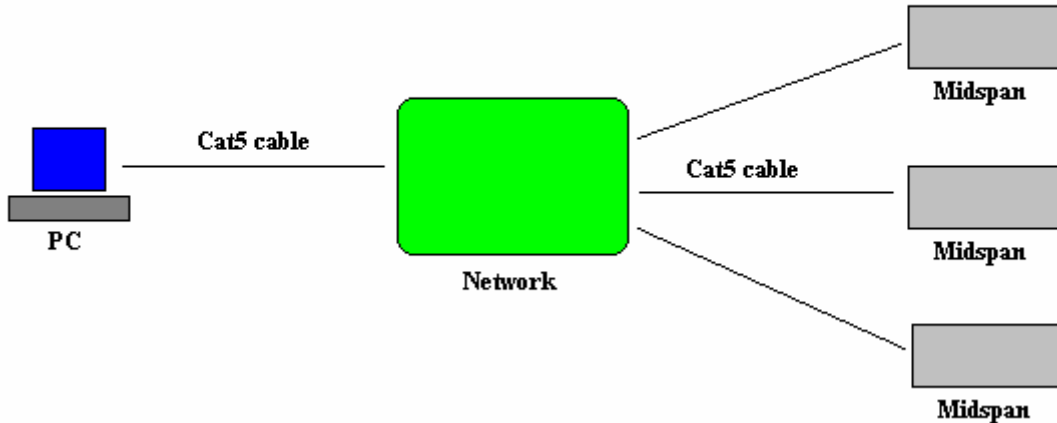
Fig. 5 DC Power connector*
 DC in – Molex, 6 pin p/n 39-30-0060 or equivalent
 DC in mate – Molex, 39-01-2065, pin p/n 39-00-0077

Parameters	Specifications		
DC Input voltage range (-R option)	47VDC to 57VDC		
DC Input current	8.7A max		
Output Power, per port			
Min. Output Power supported	No. of ports		
	-8	-16	-24
POE370U	125W min	250W min	370W min



Appendix B: Optional NIC Interface – option N

PC-to-Network-to-Midspan:




NIC Interface Setup:

NOTE: Assure the connection path between your PC and the Midspan. Skip **Step 1** if you wish to use our **Phihong GUI** to communicate with the Midspan.

1. Visit www.Midspans.com to download latest **SNMP MIB** for the NIC interface.


Example **SNMP MIB** file (please check our website for updates):

 phihong060809.txt 13 KB Text Document 8/9/2006 9:11 AM

If you choose to use your own SNMP console, please rename the SNMP MIB text file to the file extension that matches your SNMP Console. Follow the instructions for your SNMP Console to install the MIB file.

Please check the Phihong website (www.Midspans.com) occasionally for the latest updates for the MIB and the SNMP Firmware


Example of a SNMP Firmware file (please check our website for updates):

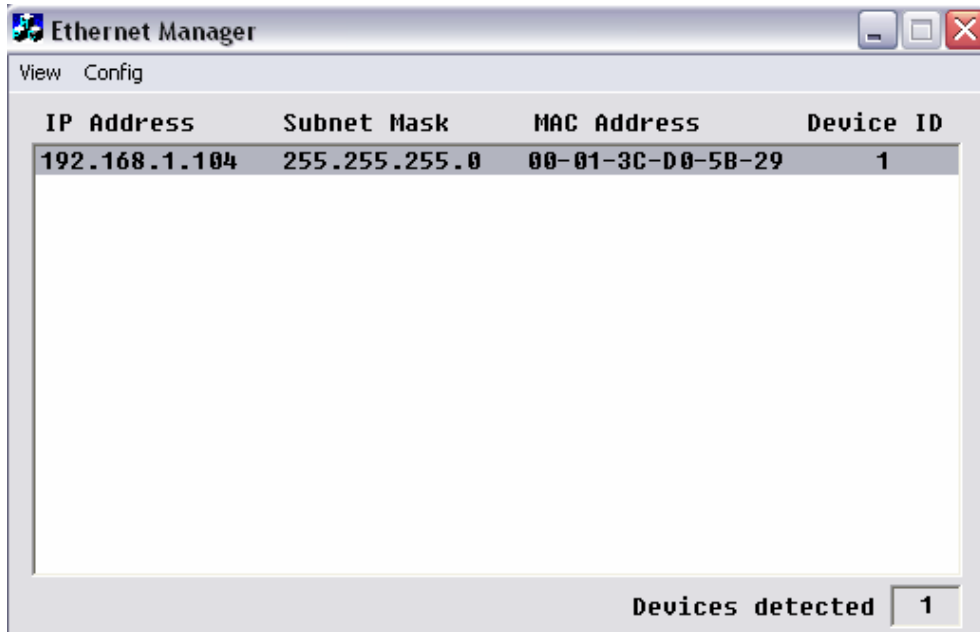
 0608095973-b14-3.bin 58 KB BIN File 8/9/2006 9:11 AM

2. Visit www.Midspans.com to download the Ethernet Manager tool (**etm.exe**). **Etm.exe** is a Device Management Utility that runs under the Windows 32 bit environment and is used to setup the IP address, subnet mask, and MAC address of your SNMP device. For more advance setup settings, use Internet Explorer or another Internet Browser.

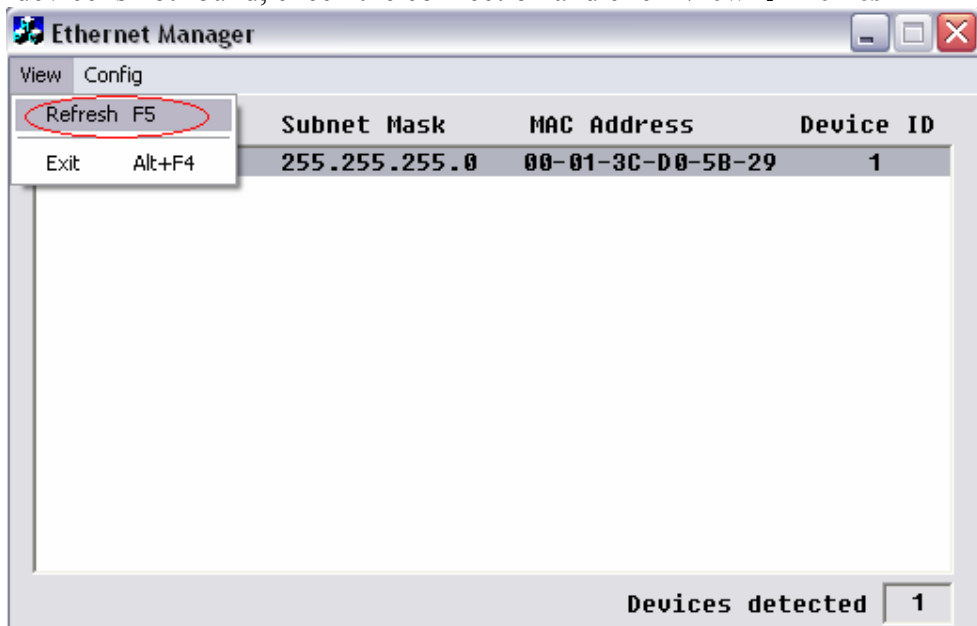


NOTE: Your IP Address may be different from the example shown below

3. Execute **etm.exe**  Ethernet Manager tool
4. Assuming the connection path between your PC and the Midspan is adequate, the Ethernet Manager tool will detect your SNMP device.

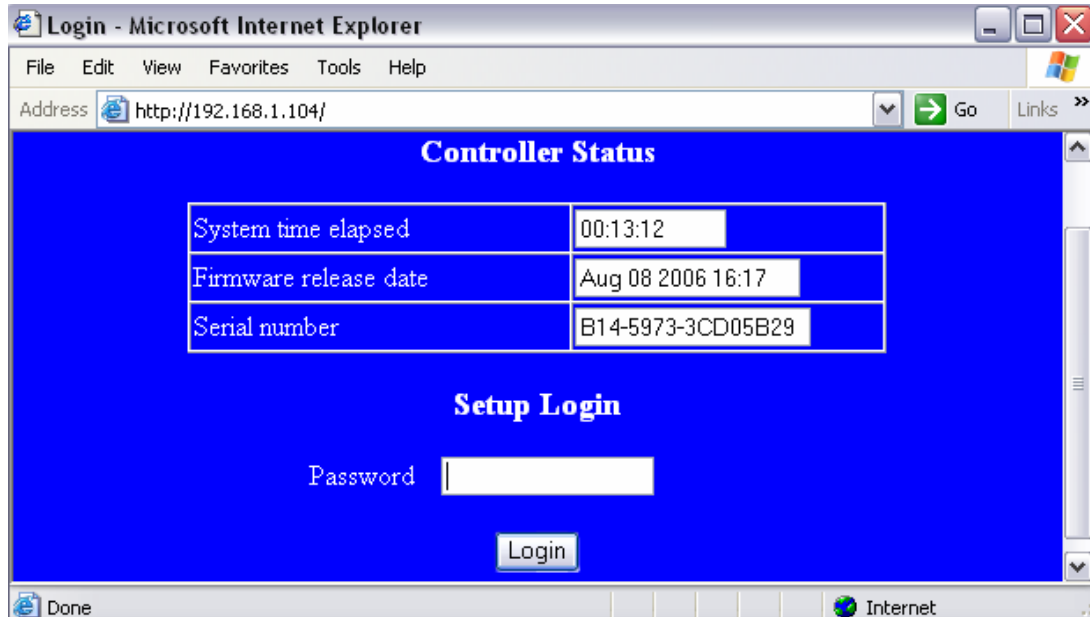


5. If your device is not found, check the connection and click **View → Refresh**





6. For Advance Setup Configuration: click **Config** → **Device Settings** OR type the IP address in your Internet Browser. Your Internet Browser will open with the following window:



The default Password: **administrator**

NOTE: If you forget your login password, please contact our Application Engineering Group for further instructions.



7. Controller Setup

Controller Setup	
IP address	192.168.1.120
Subnet mask	255.255.255.0
Gateway address	192.168.1.1
Network link speed	Auto <input type="button" value="v"/>
DHCP client	Enable <input type="button" value="v"/>
Device ID	1
Setup password	administrator
Access control	Disable <input type="button" value="v"/>
Accessible address	0.0.0.0
	0.0.0.0
	0.0.0.0
	0.0.0.0
SNMP	
SNMP agent	Enable <input type="button" value="v"/>
Read community	public
Set community	private
Trap hosts	0.0.0.0
	0.0.0.0
	0.0.0.0
	0.0.0.0
<input type="button" value="Update"/>	

NOTE: If you change the Setup password, please write it down in a safe place for your reference.



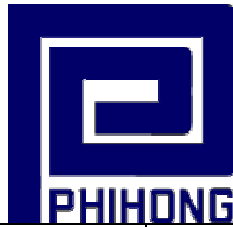
Click **Update** to save your configurations:

Controller updated
Now restarting

This process may take a few minutes, depending on your connect speed. Please check the IP address of your Midspan again, it may be updated to a new IP address if the **DHCP client** is **enabled**.

Configuration Description

Controller Setup		
	Default Settings	Description
IP Address	192.168.1.111	Four groups of numbers assigned by the Network server (DHCP mode Enabled) or user defined (DHCP mode Disabled).
Subnet mask	255.255.255.0	Four groups of numbers assigned by the Network server (DHCP mode enabled) or user defined (DHCP mode disabled).
Gateway address	192.168.0.1	Four groups of numbers assigned by the Network server (DHCP mode enabled) or user defined (DHCP mode disabled).
Network link speed	Auto	<ul style="list-style-type: none"> - Auto - 10 full-duplex - 100 full-duplex - 10 half-duplex - 100 half-duplex
DHCP client	Enable	<p>The default setting (Enable) sets the DHCP client in Dynamic mode. Dynamic mode allows the Network server to automatically assign the IP address, subnet mask, and Gateway address.</p> <p>If the DHCP client is set to Disable, the DHCP client is set to Static mode. Static mode allows the user to manually assign the</p>



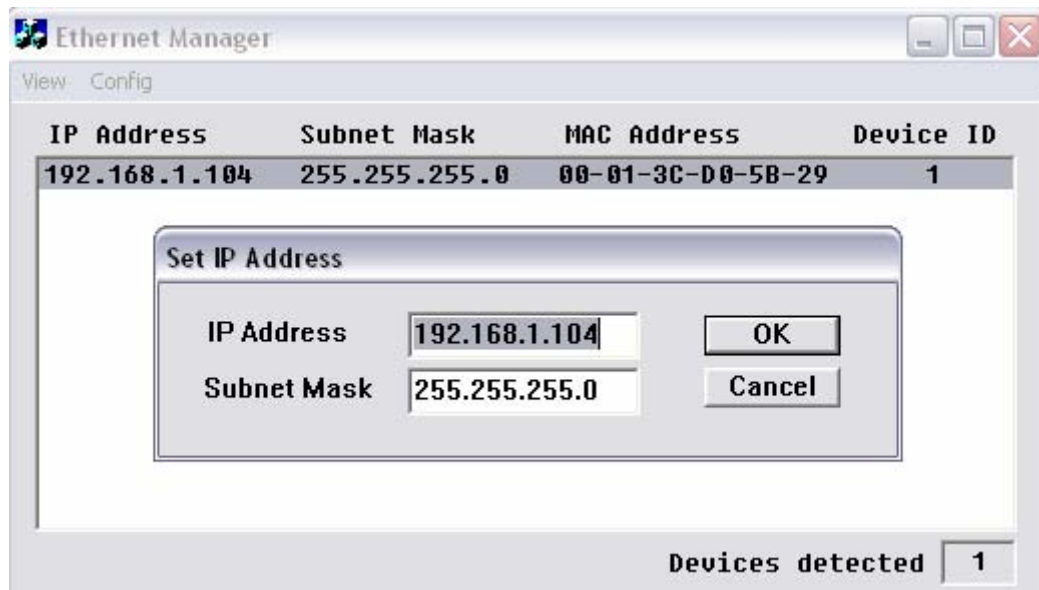
		<p>IP address, subnet mask, and Gateway address.</p> <p>Note: If the user manually assigns the IP address, the DHCP client must be set to Disable.</p>
Device ID	1	A 16-bit integer; ranging from 0 to 65535
Setup password	administrator	<p>The login password can be empty or 1-15 characters long. Please write your new password down in a safe location for future use.</p> <p>The Setup password is also use while performing a SNMP Firmware update.</p>
Access control	Disable	The default setting (Disable) sets the Access control to allow all IP address access capability. If the Access control is Enable, only the IP addresses listed in the Accessible addresses will be able to access the SNMP commands.
Accessible address	0.0.0.0	<p>Accessible address is the IP addresses that are allowed to read and write SNMP commands to the NIC Interface Midspan. You can set the IP addresses in the Controller Setup or HyperTerminal.</p>
	0.0.0.0	
	0.0.0.0	
	0.0.0.0	
SNMP agent	Enable	Enable or Disable the SNMP agent.
Read community	public	Option to set public or private
Set Community	private	Option to set public or private
Trap hosts	0.0.0.0	<p>Trap hosts are the destination IP addresses that you want the Traps to be sent to. You can set the IP addresses in the Controller Setup or HyperTerminal.</p>
	0.0.0.0	
	0.0.0.0	
	0.0.0.0	

NOTE: Trap Notifications are blocked from entering through the Windows Firewall. Please configure the Windows Firewall settings to allow incoming Network Connections, by adding a specific program (i.e. the SNMP Console).



8. If you wish to run your SNMP device in Static mode, you can also configure your IP address and Subnet Mask through the Ethernet Manager tool (**etm.exe**).
Click **Config** → **IP Address**

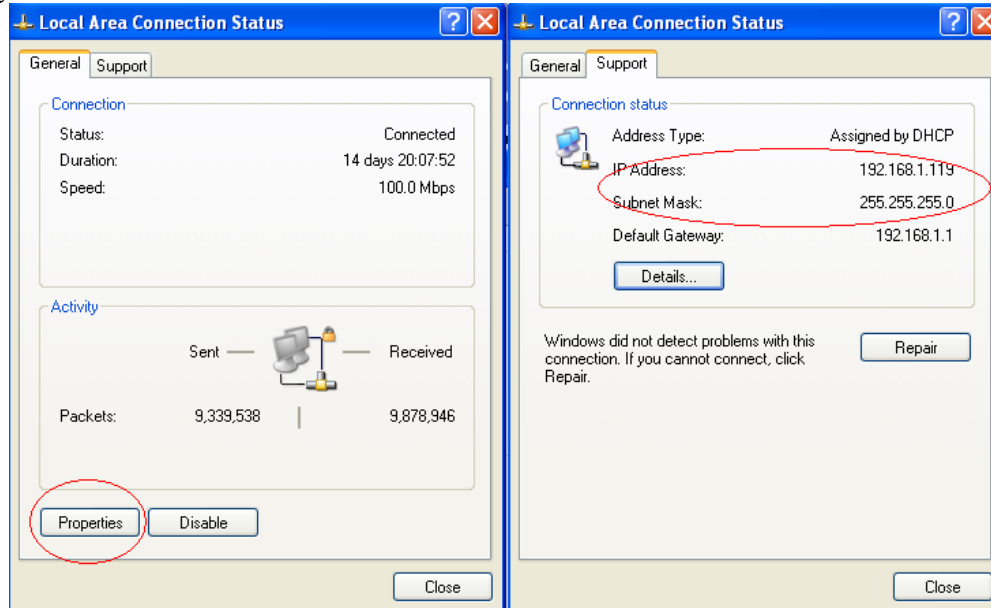
NOTE: From the **Controller Setup** menu, your **DHCP client** setting must be **Disable**.



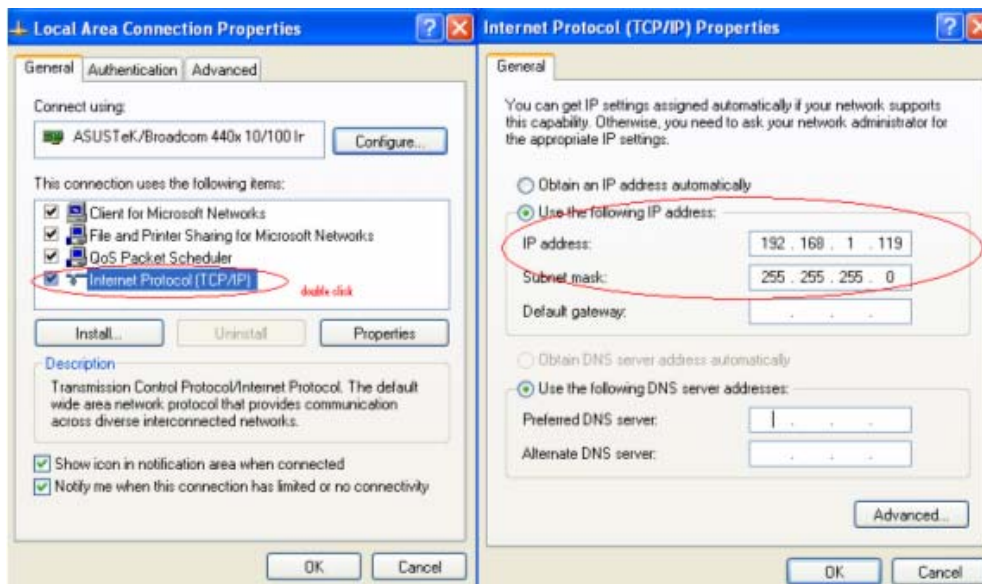


9. DHCP client – Dynamic or Static mode:

Check your **Local Area Connection Status**:



Click on **Properties** Double click Internet Protocol (TCP/IP) to view the properties. If the **DHCP client** is **Disable** it is in Static mode. The user has the option to manually set the IP Address, Subnet mask, and Gateway Address for your PC. If the **DHCP client** is **Enable** it is in Dynamic mode (Obtain an IP address automatically). The Network will automatically set the IP Address, Subnet mask, and Gateway Address for your PC.

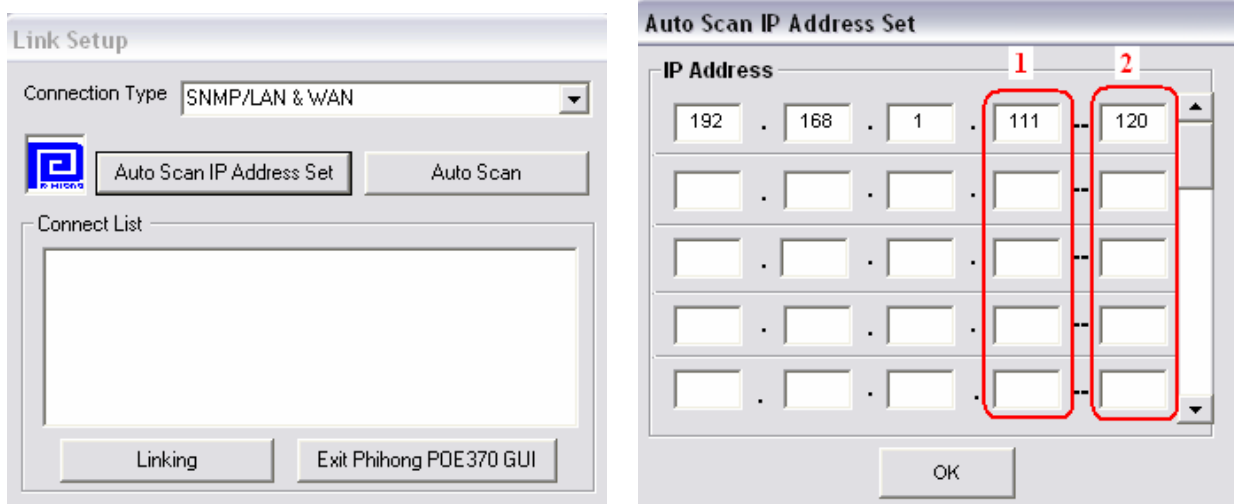




How to use the Phihong GUI with the NIC Midspan?

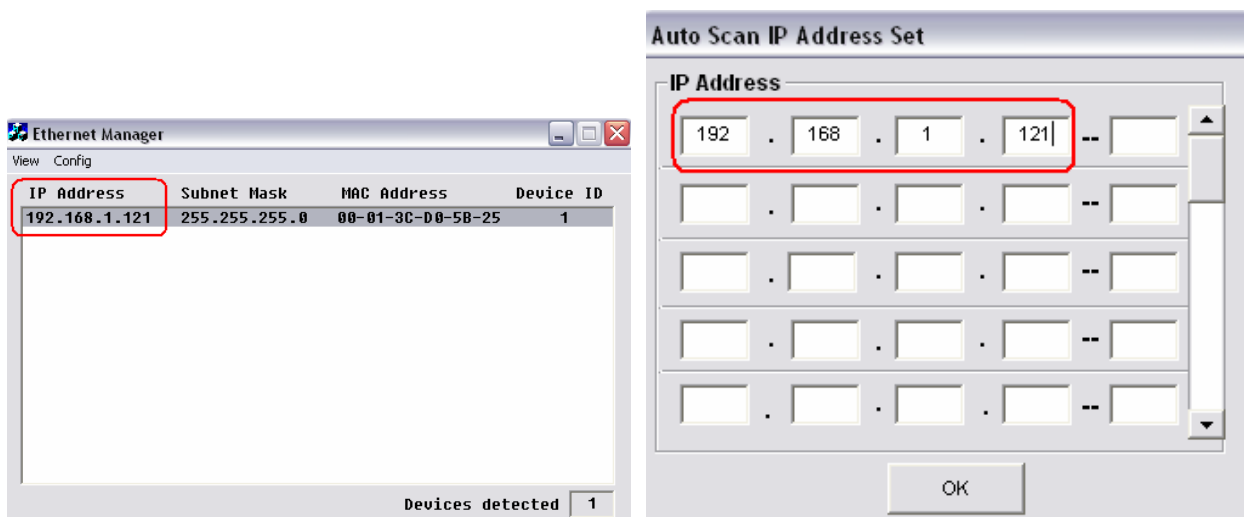
Please locate the **Phihong POE GUI x.x.exe** (x.x is revision no.) on your desktop or from your Start menu.

Step 1: Choose **Connection Type**: SNMP/LAN& WAN → select **AutoScan IP address Set**



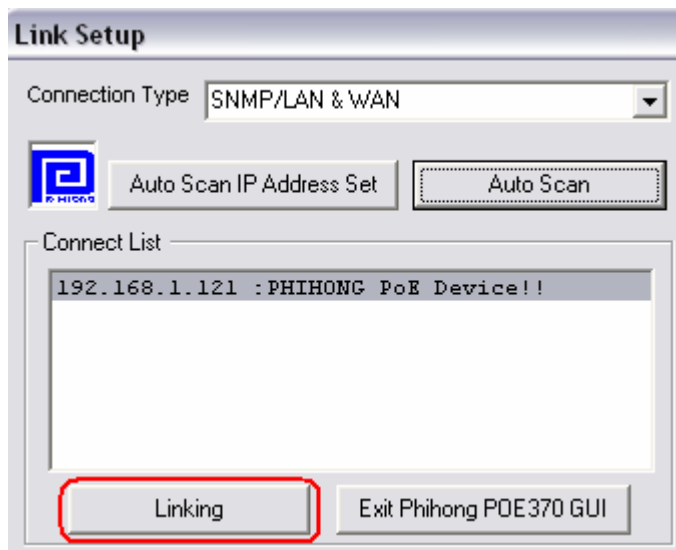
Auto Scan will search for the IP address of Phihong PoE370 device starting from the IP address of circled by (1) and ending the search at (2).

NOTE: Please take in account that each IP address will require 10 seconds to detect. For faster detection, please use the Ethernet Manager tool (**etm.exe**) to detect the IP address. The Ethernet Manager tool is mentioned in the earlier paragraphs.

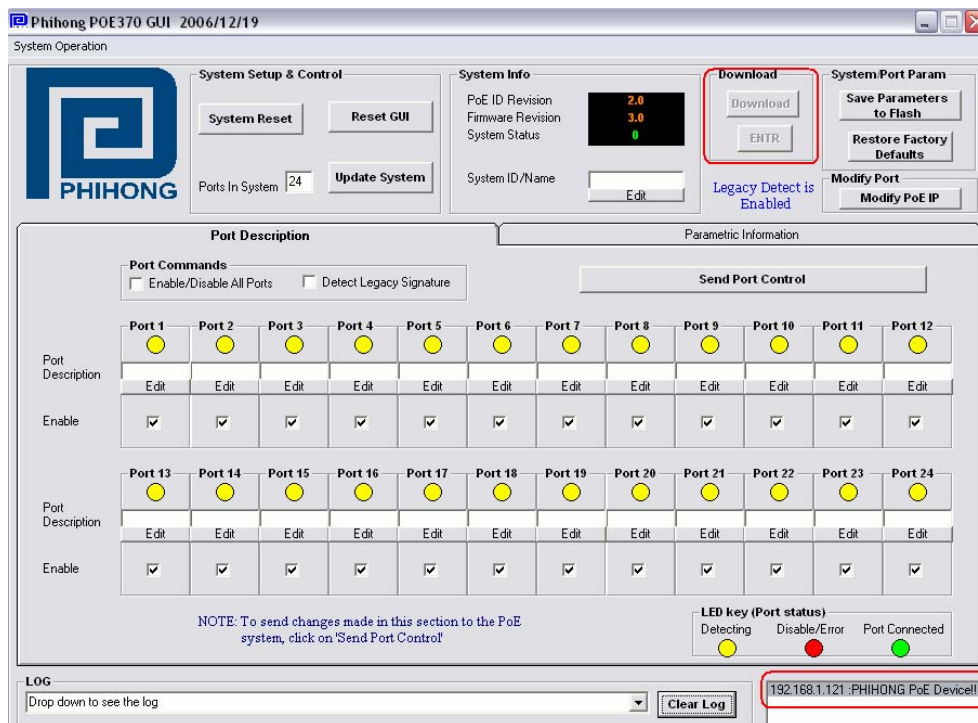




Step 2: Select **Auto Scan**: If Phihong PoE370 Device is found, click Linking.



NOTE: The IP address set will be saved internally for the next use.

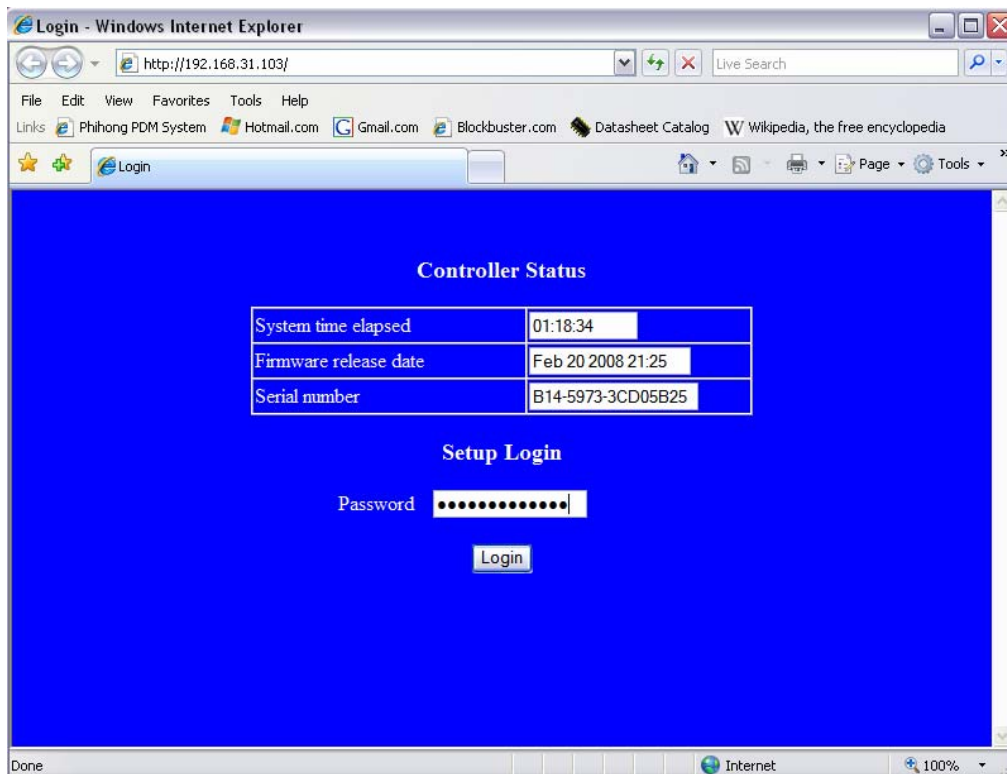
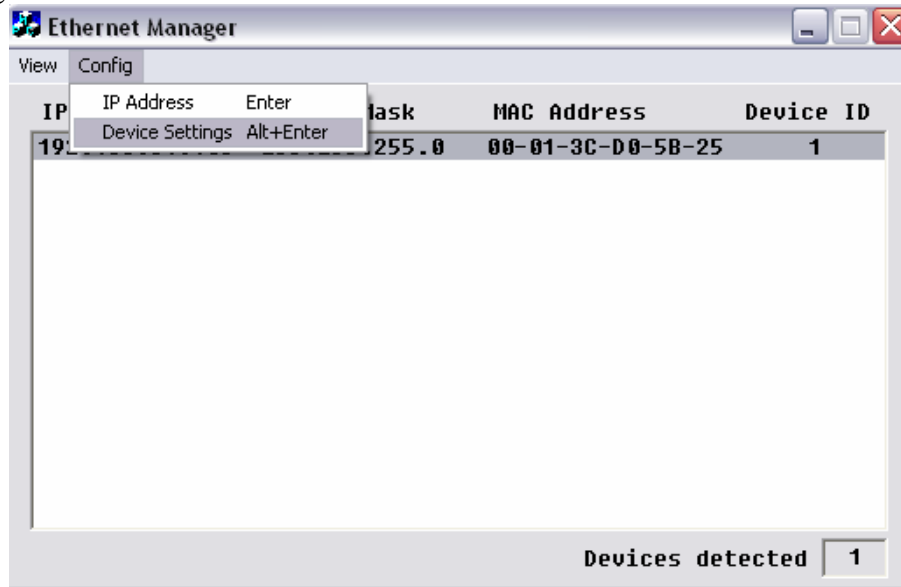


All features except for the **Download** and **Modify Port** commands are supported. Please refer to **section 4 - Midspan GUI** of this document for the full description of the Phihong GUI features.



How to setup the SNMP Read/Set Community?

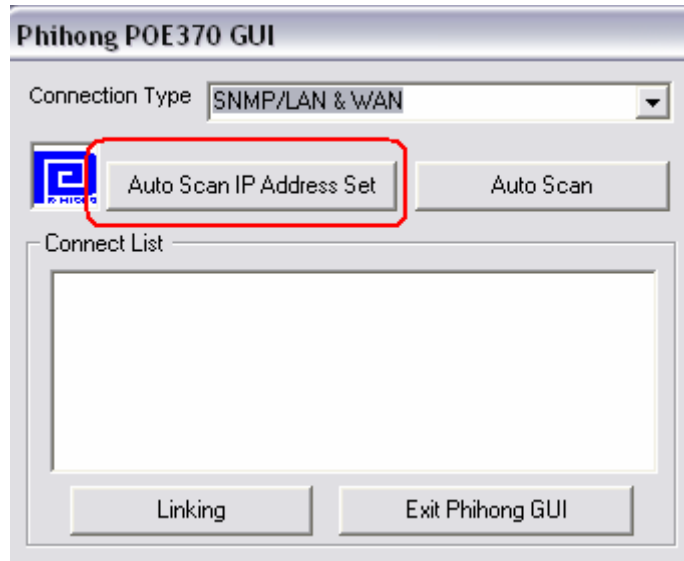
Open the Ethernet Manager tool (**etm.exe**): Enter Device Settings and login to the Advance Setup Configuration:





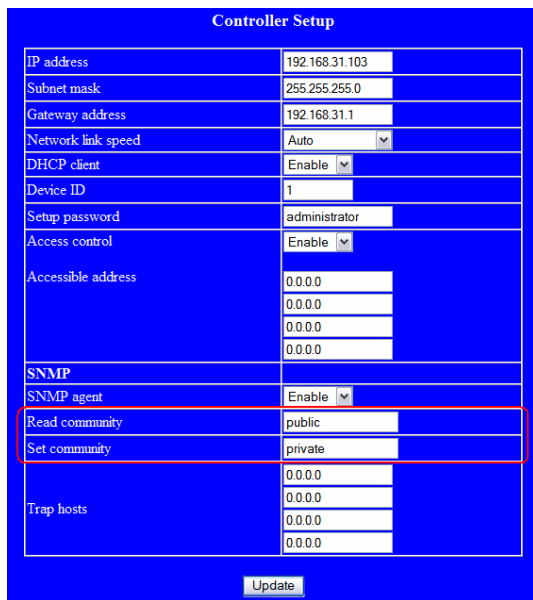
NOTE: Example shown below is using the POE370U Midspan GUI.

Open the POE GUI:



For full Read/Write Access:

Assure that the POE GUI SNMP **Community Settings** match the **Controller Setup** in the Internet Explorer.



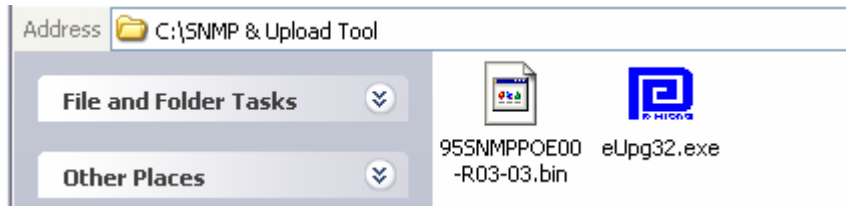
If the **Set Community** is empty, the user is only has **READ** access.



How to update the SNMP Firmware?

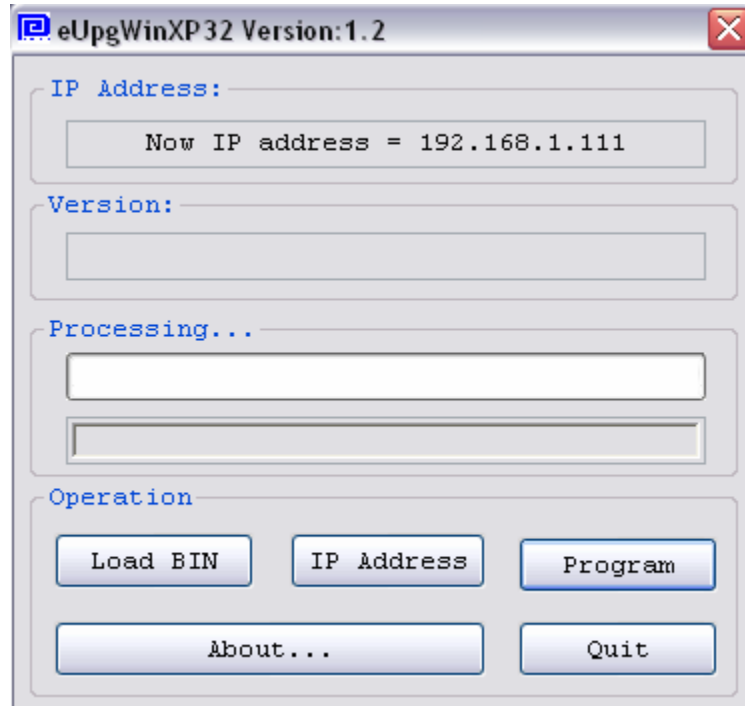
NOTE: Assure the connection path between your PC and the Midspan. The folder names are used for example purposes only, please check www.Midspans.com for current updates.

1. Please refer to **Step 1** of the **NIC Interface Setup** section. Use the Ethernet Manager tool (**etm.exe**) to detect the IP address.
2. Visit www.Midspans.com to download the SNMP firmware and Upload program. The eUp32.exe is a Firmware Update Utility that runs under the Windows 32 bit environment.



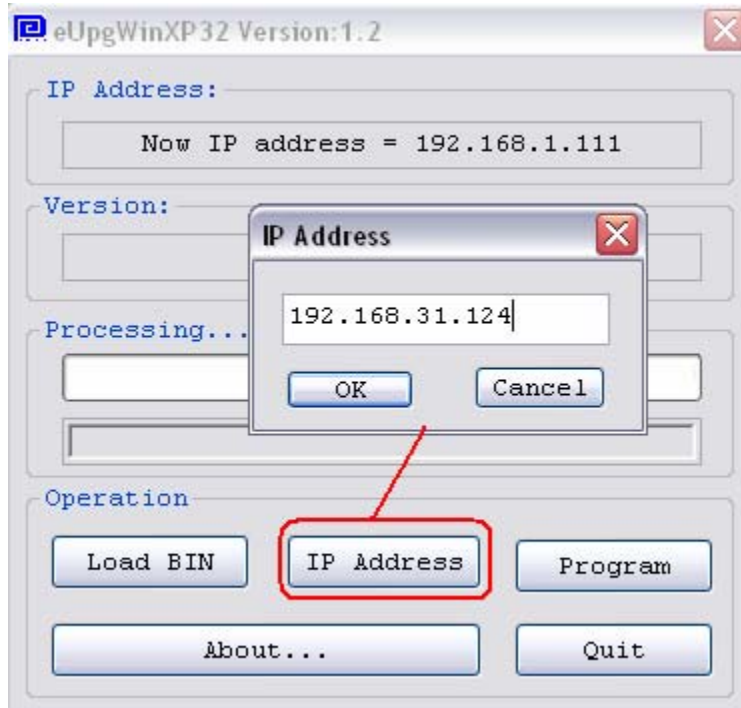
In this example: **eUp32.exe** and the **SNMP Firmware (.bin)** file are saved in a in the local disk **C:** directory.

3. Double Click  eUp32.exe

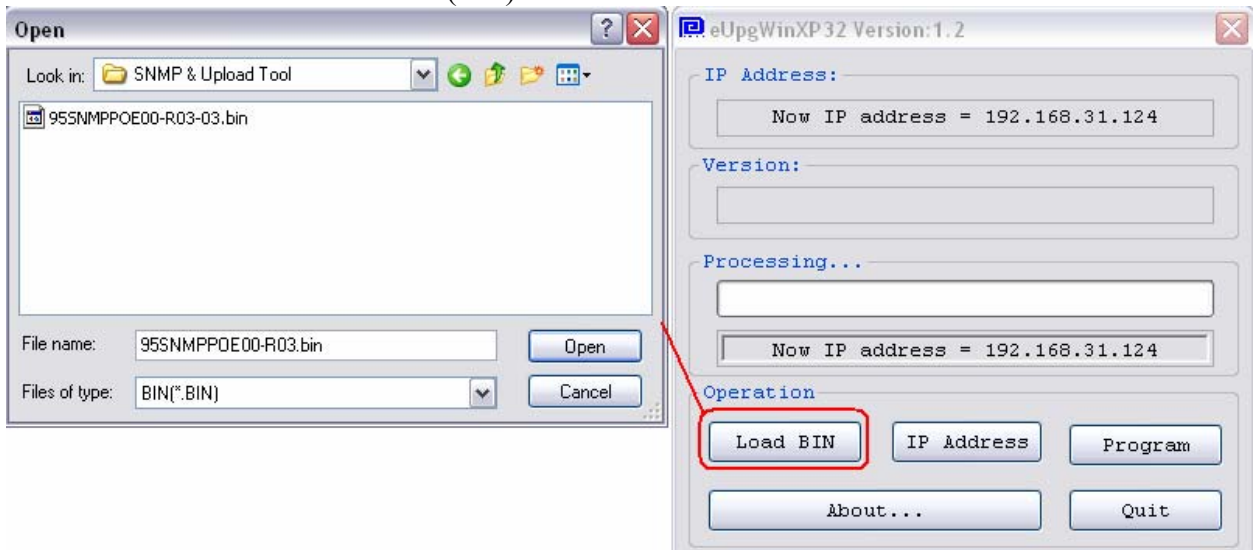




4. Assign corresponding IP Address of the NIC Interface Midspan found with ETM.exe

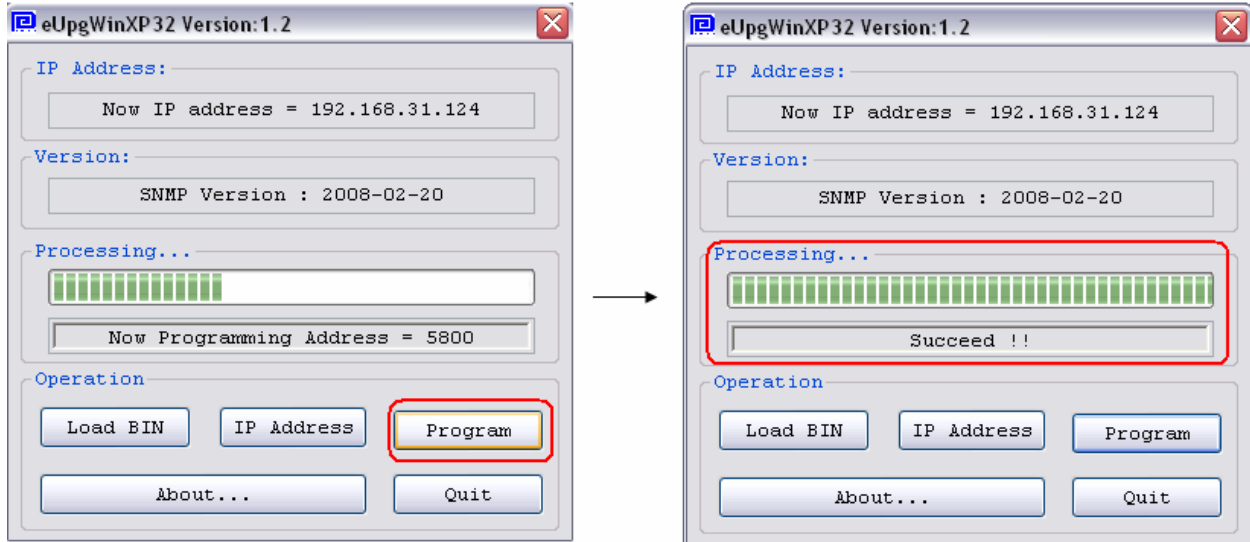


5. Load the SNMP firmware file (.bin)





6. Click Program to update the SNMP firmware. Verify that the SNMP firmware successfully updated and close the program.





How to use the HyperTerminal to communicate with the NIC Interface?

HyperTerminal is an emulator tool that allows you to connect to other computers, Internet telnet supported sites, and host computers, using your modem or a null modem cable. HyperTerminal can be used to retrieve general information about your NIC Interface Midspan.

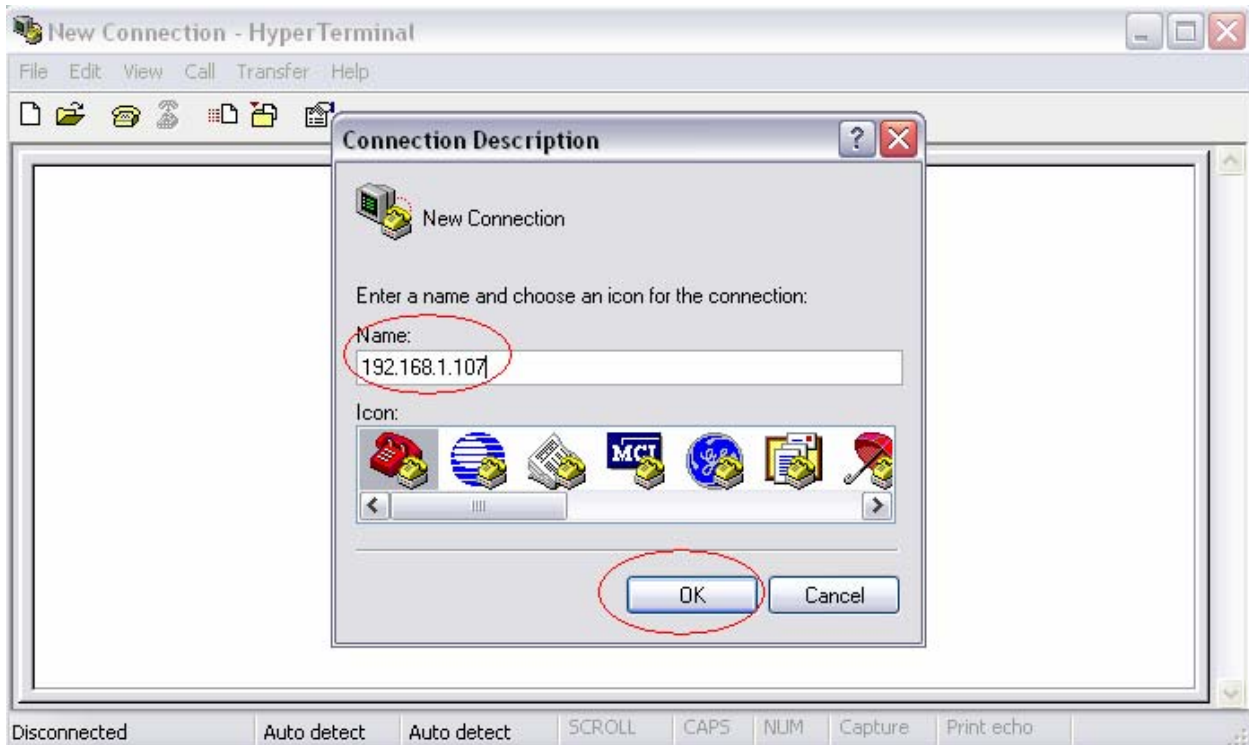
Please use the Ethernet Manager Tool (**etm.exe**) to verify the IP address of your NIC Interface Midspan.

Point to the  → **All Programs**  →  Accessories ▶ →  Communications ▶
Click  HyperTerminal .

NOTE: Assure the connection path between your PC and the Midspan. **Your IP Address and Midspan Setup Password may be different from the example shown below.** Please assure you are using the last password stored in the **Controller Setup**.

HyperTerminal setup:

Create a name for the connection file and click OK. In the example, the IP address for the NIC Interface Midspan is the name.

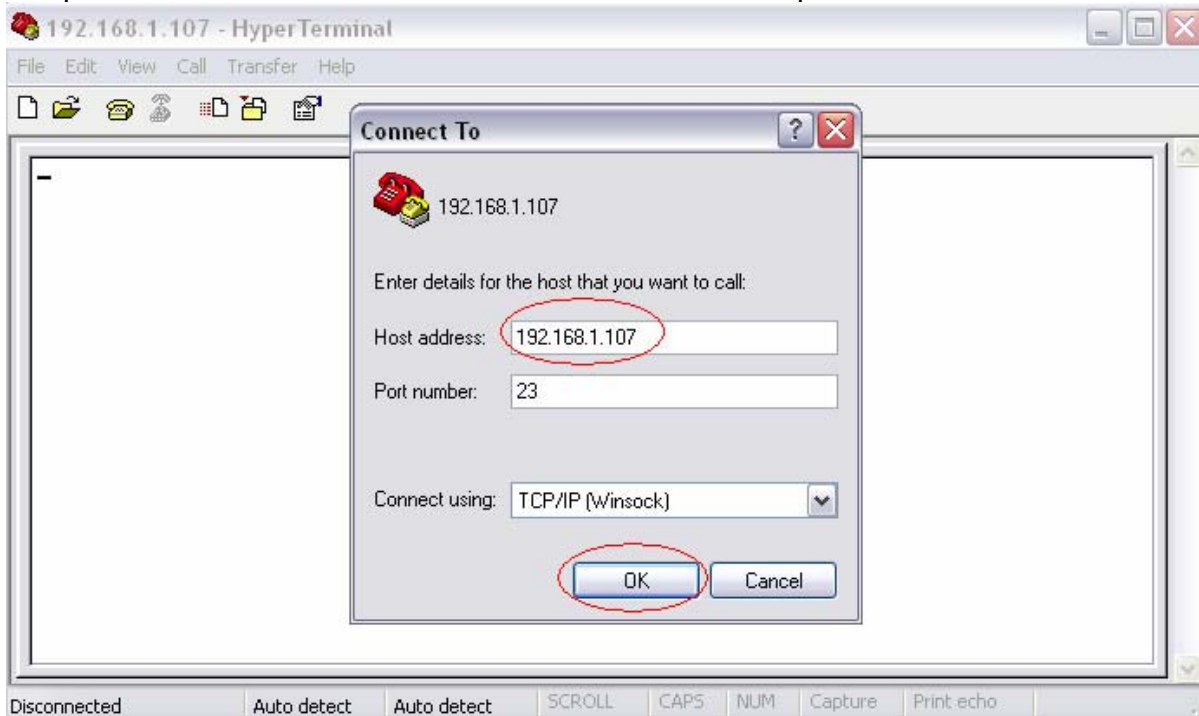




Select TCP/IP (Winsock) for a TCP/IP connection method.



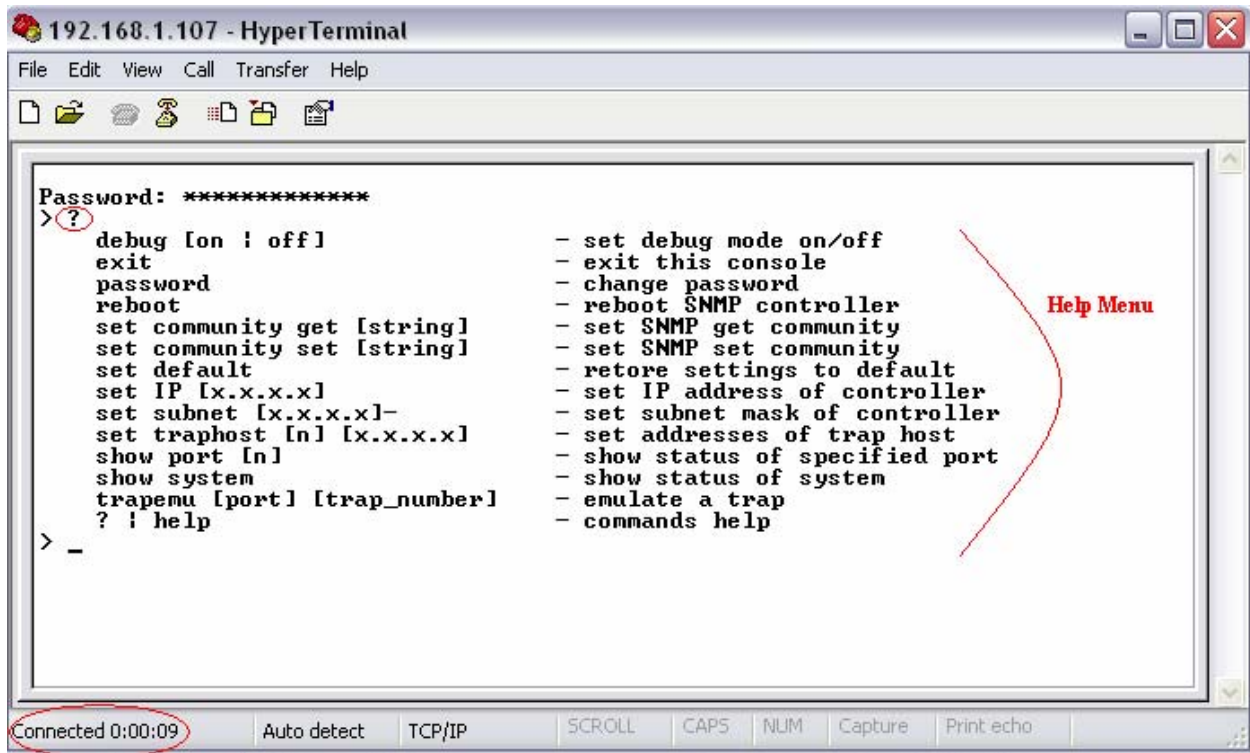
Setup the Host Address: IP address of the NIC Interface Midspan.



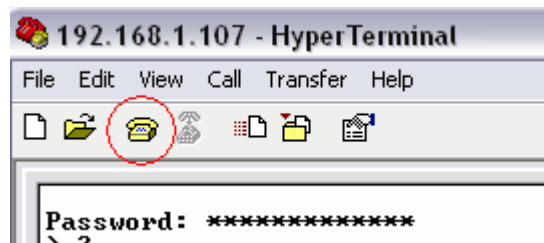


Please use the same password from the **Controller Setup** login. **The default password is: administrator**

If you entered the correct password, you will be connected.
Type: ? to enter the Help Menu.



NOTE: If you are Idle for a few minutes, you will be disconnected. Please reconnect by clicking on the Call icon. Please reenter the login password.





Help Menu:

```

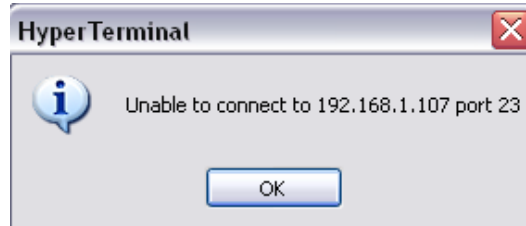
debug [on | off]          - set debug mode on/off
exit                     - exit this console
password                 - change password
reboot                   - reboot SNMP controller
set community get [string] - set SNMP get community
set community set [string] - set SNMP set community
set default              - restore settings to default
set IP [x.x.x.x]         - set IP address of controller
set subnet [x.x.x.x]-    - set subnet mask of controller
set acctrl [on | off]   - set access control on/off
set acclist [n] [x.x.x.x] - set addresses of accessible host
set traphost [n] [x.x.x.x] - set addresses of trap host
show port [n]           - show status of specified port
show system             - show status of system
trapemu [port] [trap_number] - emulate a trap
? | help                - commands help
  
```

Help Menu	Example Format to type
debug [on off]	debug on debug off (recommended unless troubleshooting)
exit	Exit
password	administrator (default password)
reboot	Reboot
set community get [string]	set community get public or private
set community set [string]	set community set public or private
set default	set default
set IP [x.x.x.x]	set IP 192.168.1.107
set subnet [x.x.x.x]-	set subnet 255.255.255.0
set acctrl [on off]	set acctrl on (Allow access for up to four IP address) set acctrl off (default setting, all access allowed)
Set acclist [n] [x.x.x.x]	Accessible address is the IP addresses that are allowed to read and write SNMP commands to the NIC Interface Midspan. You can set the IP addresses in the Controller Setup or HyperTerminal. set acclist 1 192.168.1.102 set acclist 2 192.168.1.103 set acclist 3 192.168.1.104 set acclist 4 192.168.1.105
set traphost [n] [x.x.x.x]	Trap hosts are the destination IP addresses that you want the Traps to be sent to. You can set the IP addresses in the Controller Setup or HyperTerminal. set traphost 1 192.168.1.112 set traphost 2 192.168.1.113



	set traphost 3 192.168.1.114 set traphost 4 192.168.1.115
show port [n]	show port 1 ~ 24 (depending on the Midspan model)
show system	show system
Trapemu [port] [trap_number]	Trapemu 1~24 1~7 (select trap to emulate) Trap numbers defined: 1 - poePortHWFailTrap 2 - poePortPeakOverCurrentTrap 3 - poePortOverloadTrap 4 - poePortDiscoveryFailTrap 5 - poePortClassificationFailTrap 6 - poePortDisconnectTrap 7 - PoePortVoltageFailTrap
? help	?

After a specific change, the NIC Interface Midspan will automatically reboot. The IP address of the NIC Interface Midspan may change, depending on your controller settings (DHCP client Enabled). If you receive the message below:



Please use the Ethernet Manager Tool (**etm.exe**) to verify the IP address again.



For a quick verification of the functionality of the NIC Interface Midspan:

```
192.168.1.107 - HyperTerminal
File Edit View Call Transfer Help
Step 4
Password: ***** Step 1
>
> show system Step 2
Channels:          24
Versions:
  Hardware:        2.0
  System firmware: 2.8
  SNMP firmware:   Sep 25 2006 01:49
Debug mode:       off
IP address:        192.168.1.107
Subnet mask:       255.255.255.0
SNMP get community: "public"
SNMP set community: "private"
Trap destination:
  host 1:          0.0.0.0
  host 2:          0.0.0.0
  host 3:          0.0.0.0
  host 4:          0.0.0.0
Access control:   disabled
  host 1:          0.0.0.0
  host 2:          0.0.0.0
  host 3:          0.0.0.0
  host 4:          0.0.0.0
>
> reboot Step 3
Rebooting!
>
```

Step 1: Login password (by default): **administrator**

Step 2: Type: **show system** - Verify the **System firmware** and **SNMP Firmware** is the latest.

Step 3: Type: **reboot**

Verify that the Midspan is rebooting, all LEDs will flash.

Step 4: Click on the **disconnect** icon

Step 5: If you wish to reconnect use the Ethernet Manager Tool (**etm.exe**) to verify the IP address of the NIC Interface Midspan.

Note: Your IP Address and Midspan Setup Password may be different from the example shown above. Please check the Phihong website for the latest firmware revision.



SNMP MIB:

Phihong USA Corp. registered Enterprise ID: **1.3.6.1.4.1.24852**

SNMP Version: **SNMP V2**

TCP, UDP Port: **161 SNMP** (Simple Network Management Protocol)¹

OID	Name	Type	Value	Description
1.3.6.1.4.1.24852.2.2.1.0	poeSystemActionHubReset	INTEGER	ready(0) reset(1)	Reset the POE controller
1.3.6.1.4.1.24852.2.2.2.0	poeSystemActionHubRestoreFactoryDefault	INTEGER	ready(0) restore(1)	Restore Factory Defaults
1.3.6.1.4.1.24852.2.2.3.0	poeSystemActionHubSaveConfiguration	INTEGER	ready(0) save(1)	Save the POE parameters to flash
1.3.6.1.4.1.24852.2.2.4.0	poeSystemAllPortPowerEnable	INTEGER	ready(0) disable(1) enable(2)	Setting this object at a value enable(2) enables detection mechanism for all port. Setting this object at a value disable(1) disables detection mechanism for all port.
1.3.6.1.4.1.24852.2.2.6.0	poeSystemHWVersion	DisplayString	Read-only	System hardware version for the Main board
1.3.6.1.4.1.24852.2.2.7.0	poeSystemNumberOfChannel	INTEGER	Read-only	Number of ports available in the system
1.3.6.1.4.1.24852.2.2.8.0	poeSystemProductPartNumber	INTEGER	Read-only	poe370U-480-8 poe370U-480-16 poe370U-480-24
1.3.6.1.4.1.24852.2.2.10.0	poeSystemFirmwareVersion	DisplayString	Read-only	System firmware version for the POE
1.3.6.1.4.1.24852.2.2.11.0	poeSystemDescription	DisplayString (SIZE (0..10))	Read – Write	System Description, max. length of 10 characters
1.3.6.1.4.1.24852.2.2.12.0	poeSystemConsumptionPower ***	INTEGER	Read-only	Measured power usage expressed in Watts
1.3.6.1.4.1.24852.2.2.13.0	poeSystemControlACPower ***	INTEGER	Read – Write	Sets the value of available power in Watts to be supplied by primary(AC) power source.



1.3.6.1.4.1.24852.2.2.14.0	poeSystemControlDCPower ***	INTEGER	Read – Write	Sets the value of available power in Watts to be supplied by secondary(DC) power source
1.3.6.1.4.1.24852.2.2.15.0	poeSystemControlBothPower ***	INTEGER	Read – Write	Sets the value of the total available power in Watts to be supplied by both power sources.
1.3.6.1.4.1.24852.2.3.1.1.1~24	poePortIndex	INTEGER (1..2147483647)	Read-only	A unique value for each port
1.3.6.1.4.1.24852.2.3.1.2.1~24	poePortPowerEnable	INTEGER	disable(1) enable(2)	Setting this object at a value enable(2) enables the detection mechanism for this port. Setting this object at a value disable(1) disables the detection mechanism for this port
1.3.6.1.4.1.24852.2.3.1.3.1~24	poePortControlMaxPower ***	INTEGER	Read – Write	This command specifies the max. power in [watts] to the port.
1.3.6.1.4.1.24852.2.3.1.4.0	poePortCurrentStatus ***	INTEGER	underCurrent(1) overCurrent(2) both(3) ok(4)	Describes a current port status related to the power generation The value underCurrent(1) indicates that the port current is below the minimal value since the attribute was last cleared. The value overCurrent(2) indicates that the port current exceeds the maximal value since the attribute was last cleared. The value both(3) indicates that both



				underCurrent and overCurrent since the attribute was last cleared. The value ok(4) indicates neither an undercurrent or an overcurrent condition has been detected since the attribute was last cleared. This attribute is cleared through the poePortCurrentStatusClear action.
1.3.6.1.4.1.24852.2.3.1.5.0	poePortCurrentStatusClear***	INTEGER	off(1) clear(2)	Setting the value of this object to clear(2) clears the value of the poePortStatus and enable the agent to update the poePortStatus. During Read operation, this value will be off(1)
1.3.6.1.4.1.24852.2.3.1.6.1~24	poePortDescription	DisplayString (SIZE (0..10))	Read – Write	Describes the Port Description for the port
1.3.6.1.4.1.24852.2.3.1.7.1~24	poePortDetectionStatus ***	INTEGER	Read-only	Off(0) DiscR(1) DiscC(2) Class(3) RampUp(4) RampDown(5) SampleI(8) SampleV(9)
1.3.6.1.4.1.24852.2.3.1.8.1~24	poePortPowerClassifications ***	INTEGER	Read-only	class0(1) class1(2) class2(3) class3(4) class4(5)
1.3.6.1.4.1.24852.2.3.1.9.1~24	poePortPowerDetectionControl***	INTEGER	Read-Write	Command controls the Port Power Detection Control
1.3.6.1.4.1.24852.2.3.1.10.1~24	poePortPowerPriority ***	INTEGER	critical(1) high(2) low(3)	Sets port priority
1.3.6.1.4.1.24852.2.3.1.11.1~24	poePortPower	INTEGER	Read-only	Port Power reading (in mWatts)



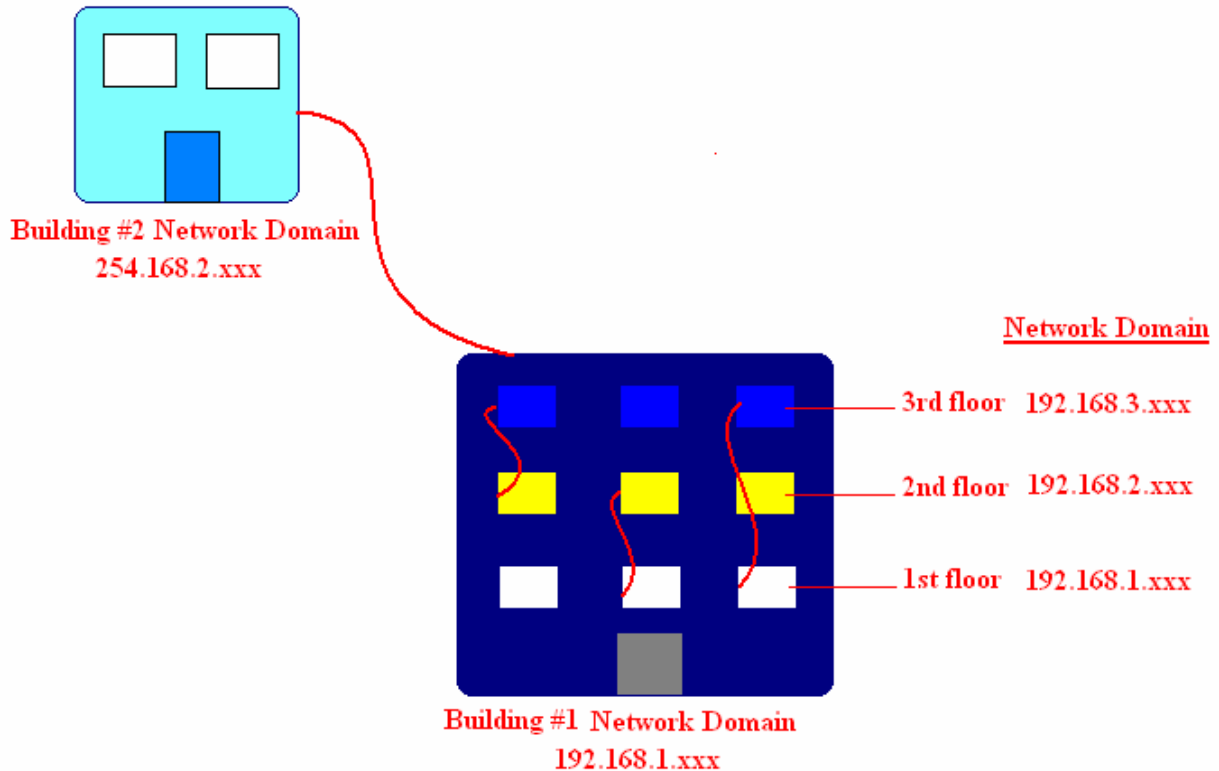
1.3.6.1.4.1.24852.2.3.1.12.1~24	poePortVoltage	INTEGER	Read-only	Port Voltage reading (in Volts)
1.3.6.1.4.1.24852.2.3.1.13.1~24	poePortCurrent	INTEGER	Read-only	Port Current reading (in mAmps)
1.3.6.1.4.1.24852.2.3.1.14.1~24	poePortResistance	INTEGER	Read-only	Port Resistance reading (in Ohm)
1.3.6.1.4.1.24852.2.4.1.1.1~24	poeTrapsControlGroupIndex	INTEGER (0..65535)	Not-accessible	Uniquely describes the group the Trap Control is located.
1.3.6.1.4.1.24852.2.4.1.2.1~24	poeTrapsControlEnable	INTEGER	trapsDisabled (1) trapsEnabled(2)	Enables and Disables the Trap from the Agent
1.3.6.1.4.1.24852.2.5.1	poePortHWFailTrap	NOTIFICATION		Hardware Failure Trap
1.3.6.1.4.1.24852.2.5.2	poePortPeakOverCurrentTrap	NOTIFICATION		Peak Over Current Trap
1.3.6.1.4.1.24852.2.5.3	poePortOverloadTrap	NOTIFICATION		Overload Trap
1.3.6.1.4.1.24852.2.5.4	poePortDiscoveryFailTrap	NOTIFICATION		Discovery Failure Trap
1.3.6.1.4.1.24852.2.5.5	poePortClassificationFailTrap	NOTIFICATION		Classification Fail Trap
1.3.6.1.4.1.24852.2.5.6	poePortDisconnectTrap	NOTIFICATION		Port Disconnect Trap
1.3.6.1.4.1.24852.2.5.7	PoePortVoltageFailTrap	NOTIFICATION		Port Voltage Fail Trap

*** Currently disabled. Reserved for future use.

¹ The NIC Interface Midspan performs under the TCP/IP, UDP port of 161. UDP port 161 for SNMP is an official IANA registered UDP port number. While attempting to connect to the NIC Interface Midspan via a different network domain², the user must acknowledge that the local network supports the UDP port 161.



2 Different network domain



Description of Diagram:

- Building #1 has one main Network Server that links all three floors together.
- Building #2 has one main Network Server with the Network Domain of 254.168.2.xxx.

Different methods of connection:

NOTE: Taking consideration that the **Access Control** from the **Controller Setup** is **Disabled** (Allowing all access)

- **Connection within the same Network Domain.** (Please refer to the diagram above for Building #1) For instance:

- The NIC Interface Midspan is connected to the Network Domain of **192.168.1.xxx** located on the 1st floor. All Computers connected to the Network Domain of **192.168.1.xxx** can communicate with the NIC Interface Midspan.
- The NIC Interface Midspan remains connected on the Network Domain of **192.168.1.xxx**. Since Building #1 has a main Network Server that links all three floors together, the computers on the 2nd (**192.168.2.xxx**) and 3rd (**192.168.3.xxx**) floor can also communicate with the NIC Interface Midspan.



- **Connection between different Network Domains.** (Please refer to the diagram above Building #2) For instance:

- The NIC Interface Midspan is connected to the Network Domain of Building #1 (**192.168.1.xxx**). Building #2 (**254.168.2.xxx**) would like to communicate with the NIC Interface Midspan from Building #1. Building #1 must configure the main Network Server to allow access from an outside source, in this case Building #2. Building #1 must be able to support UDP port 161, for SNMP. Once the access is allowed, Building #2 can communicate with the NIC Interface Midspan.



Appendix C: Frequent Questions

Q: What is the maximum heat dissipation of the PoE370U-XXX-X-XX-R with maximum load?

A: AC mode \approx 125W
DC mode \approx 20W

Q: What is the function of the “current share” pin on the DC Power connector? Are there any protocols or procedures associated with it?

A: The DC solution contains 3x 500W 50V rectifier modules (1000W N+1) with custom cables available for connection between the rectifier rack and up to 4 midspans. The current share pin is an option which could be used to have the power supply inside the midspan current share with the rectifiers. There are no protocols or procedures associated with it other than it's designed only to work with our rectifier system and even then its not perfect sharing due to the inrush limiting components inside the midspan located on the DC input.

Q: What type of Display Properties settings is required to run the PoE370 GUI (Serial Communication)?

A: 16-Bit: 1024 X 768 pixels, 1280 X 1024 pixels
32-Bit: 1024 X 768 pixels, 1280 X 1024 pixels

If the settings are set to be at least the values shown below, the edges of the GUI window will be cropped.

16-Bit: 640 X 480 pixels, 800 X 600 pixels
32-Bit: 640 X 480 pixels, 800 X 600 pixels